



Since : 1990

Your Specialist for Gearbox

Extruder Duty Helical Gear Box



Gear Box

Internal Composition

Oil Seal

Input/Output Shafts Incorporate
Double Oil Seals Imported

Gear Case

Super Rigid Housing of Graded
Cast Iron Machine on High -
Precision Machine

Water Cooling

In-built

Gears

Made From High Graded Alloy Steel Harden
(HRC58 to 61) and Precision Profile Ground
to Meet Higher Standard DIN 5/ DIN 6

Bearing

Top quality Roller bearings to be selected
precisely calculated for carry heavy load

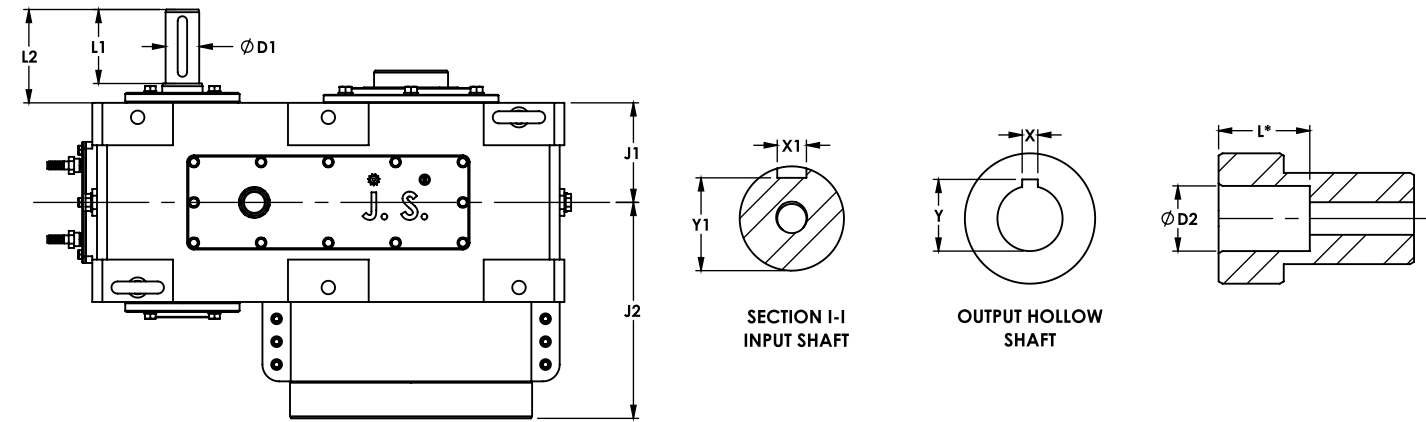
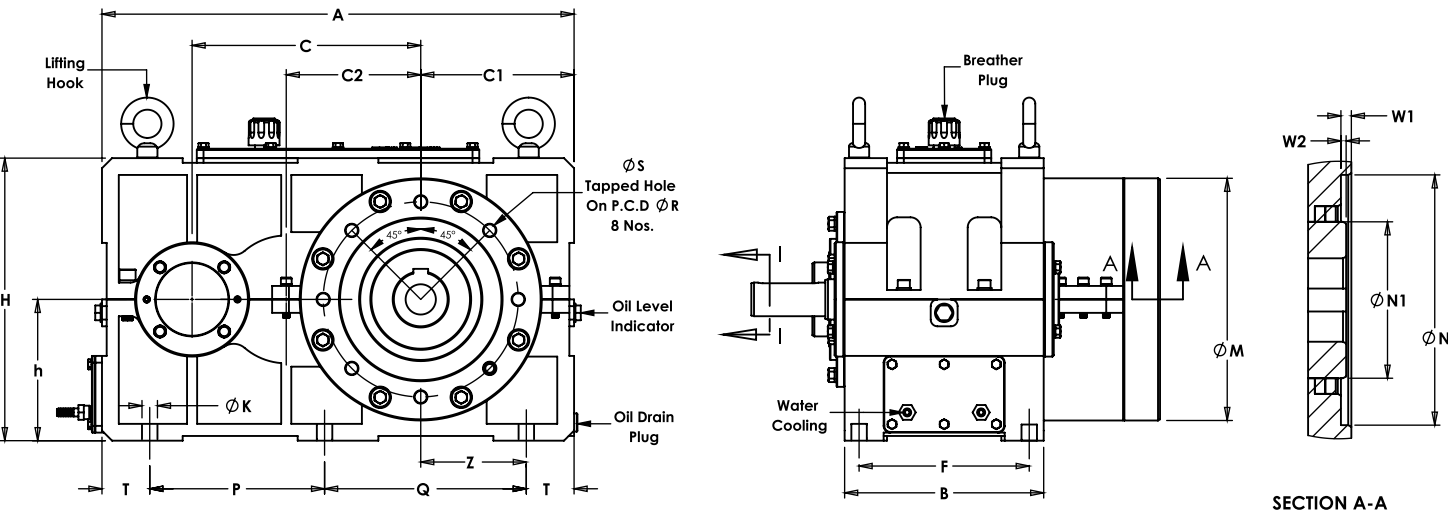
Output Hollow Shaft

Made From High Graded Alloy Steel
Harden & Ground

Assembly

Gears and housing are assembled and test-run by technicians after stringent QC.
Bearing temperature is 100% tested during the trial operation.
Noise is kept below the standard 90dB

Technical Drawing



Dimensions


TYPE	GEARBOX HOUSING DIMENSION															
MODEL	C	C1	C2	A	H	h	Z	T	P	Q	B	F	L2	J1	J2	ØK
SBH-90	155	115	90	330	215	105	60	55	220	N/A	156	132	63	78	145	14
SBH-110	190	167	110	456	265	133	118	49	358	N/A	186	165	86	93	209	14
SBH-125	215	172	125	485	285	143	122	50	185	200	205	170	108	103	203	14
SBH-140	240	196	140	535	340	170	140	56	203	220	215	190	118	108	232	17
SBH-160	270	184	160	578	356	178	125	59	205	255	265	230	127	133	270	19
SBH-180	305	220	180	636	395	198	153	67	222	280	280	250	148	140	272	21
SBH-200	340	232	200	702	420	210	161	71	260	300	296	265	139	148	321	23
SBH-225	385	260	225	790	484	242	180	80	300	330	330	280	180	165	330	25
SBH-250	430	320	250	980	582	291	205	115	375	375	412	352	171	206	399	27
SBH-280	480	360	280	1020	685	340	260	100	270	550	438	358	205	217	440	27

TYPE	INPUT SHAFT				MOUNTING FLANGE						THRUST (BRG)*	WEIGHT (APPROX)*	OIL QTY*
MODEL	ØD1	L1	X1	Y1	ØM	ØN	ØN1	W1	W2	ØR	ØS		
SBH-90	20	55	6	16.5	150	100	60	7	5	125	M10	32309	90Kg
SBH-110	25	60	8	21	220	115	80	8	5	180	M12	29414	100Kg
SBH-125	30	80	8	26	240	130	90	8	5	200	M12	29416	125Kg
SBH-140	35	80	10	30	285	200	110	8	5	240	M12	29418	173Kg
SBH-160	45	105	14	39.5	285	200	125	10	5	250	M16	29420	236Kg
SBH-180	50	110	14	44.5	315	200	130	10	5	280	M16	29422	300Kg
SBH-200	50	110	16	44	360	240	150	10	5	290	M20	29426	460Kg
SBH-225	60	140	18	53	400	245	165	14	5	325	M24	29430	675Kg
SBH-250	70	140	20	62.5	475	340	210	14	5	410	M24	29434	900Kg
SBH-280	75	140	20	67.5	520	380	220	15	8	450	M30	29438	1300Kg

Note :

All Dimensions are in mm.
Available Ratio :- 6:1, 8:1, 10:1, 13:1, 15:1, 17:1, 20:1, 22:1

In House Facilities


UNIT 1
9,000
sq. feet



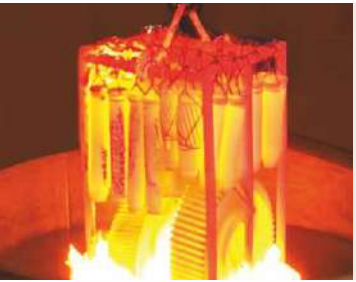

UNIT 2
10,000
sq. feet



Plant and Machinery

- ⚙ CNC Turning Machine (Upto 1 Meter Length) - 3 NOS
- ⚙ Gear Hobbing Machine (Upto 1000 MM Diameter) (Germany) - 5 NOS
- ⚙ Gear Grinding Machine (Upto 700 MM Diameter) (Germany and Swiss) - 5 NOS
- ⚙ HMC Machine (Japan) - 2 NOS
- ⚙ Boring Machine - 3 NOS
- ⚙ Round Bandsaw Machine (Upto DIA 420) - 2 NOS
- ⚙ Conventional Lathe Machine - 4 NOS

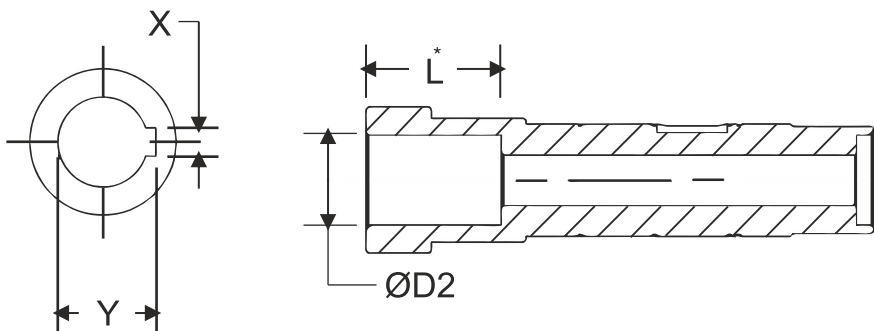
- ⚙ Radial Drill Machine (HMT Make) - 2 NOS
- ⚙ Slotting Machine (400 MM Stoke) - 2 NOS
- ⚙ Measuring Instruments - Mitutoyo Make
- ⚙ Milling Machine for Heavy Key Way (Germany) - 2 NOS
- ⚙ Surface Grinding Machine - 1 NOS
- ⚙ In-house Paint Shop
- ⚙ In-house Fabrication Work
- ⚙ Heavy Duty Hydraulic Press - 4 NOS
- ⚙ EOT Crane (5 Ton Capacity) - 3 NOS



Our Exhibition Presence



Details Of Standard Bore & Keyway



SBH – 110			
Available Standard Bore & Keyway			
Output Shaft Dia. ØD2	Keyway X	Keyway Y	L = 75 mm*
Ø25	8.0	28.5	
Ø30	8.0	33.5	
Ø35	10.0	38.5	
Splines Available On Request***			

SBH – 125			
Available Standard Bore & Keyway			
Output Shaft Dia. ØD2	Keyway X	Keyway Y	L = 85 mm*
Ø30	8.0	33.5	
Ø35	10.0	38.5	
Ø40	12.0	43.5	
Splines Available On Request***			

SBH – 90			
Available Standard Bore & Keyway			
Output Shaft Dia. ØD2	Keyway X	Keyway Y	L = 50 mm*
Ø20	6.0	22.9	
Ø22	6.0	24.9	
Ø25	8.0	28.5	
Splines Available On Request***			

SBH – 140			
Available Standard Bore & Keyway			
Output Shaft Dia. ØD2	Keyway X	Keyway Y	L = 100 mm*
Ø40	12.0	43.5	
Ø45	14.0	49.0	
Ø50	14.0	54.0	
Splines Available On Request***			

SBH – 160			
Available Standard Bore & Keyway			
Output Shaft Dia. ØD2	Keyway X	Keyway Y	L = 140 mm*
Ø50	14.0	54.0	
Ø55	16.0	59.5	
Ø60	18.0	64.6	
Splines Available On Request***			

SBH – 180			
Available Standard Bore & Keyway			
Output Shaft Dia. ØD2	Keyway X	Keyway Y	L = 150 mm*
Ø60	18.0	64.6	
Ø65	18.0	69.6	
Ø70	20.0	75.1	
Splines Available On Request***			

SBH – 200			
Available Standard Bore & Keyway			
Output Shaft Dia. ØD2	Keyway X	Keyway Y	L = 160 mm*
Ø75	20.0	80.1	
Ø80	22.0	85.6	
Ø85	22.0	90.6	
Ø90	25.0	95.6	
Splines Available On Request***			

SBH – 225			
Available Standard Bore & Keyway			
Output Shaft Dia. ØD2	Keyway X	Keyway Y	L = 175 mm*
Ø80	22.0	85.6	
Ø85	22.0	90.6	
Ø90	25.0	95.6	
Ø100	28.0	106.6	
Splines Available On Request***			

SBH – 250			
Available Standard Bore & Keyway			
Output Shaft Dia. ØD2	Keyway X	Keyway Y	L = 200 mm*
Ø80	22.0	85.6	
Ø90	25.0	95.6	
Ø100	28.0	106.6	
Ø110	28.0	116.6	
Ø120	32.0	127.6	
Splines Available On Request***			

SBH – 280			
Available Standard Bore & Keyway			
Output Shaft Dia. ØD2	Keyway X	Keyway Y	L = 280 mm*
Ø80	22.0	85.6	
Ø90	25.0	95.6	
Ø100	28.0	106.6	
Ø110	28.0	116.6	
Ø120	32.0	127.6	
Splines Available On Request***			

Service & Maintenance



Extend the life of your **GEARBOX** with
Predictive Maintenance



Anyone deciding in favour of J. S. high-performance gear unit automatically decides in favour of state- of-the-art engineering, efficient order handling and proven workflows. The know-how gathered in the course of decades enables us to fulfil all our customers' special requirements in many different sectors - from plastics via food processing all the way to heavy industry and energy supply flexibly and customized. J. S. provides comprehensive advice on selecting the right gearing solution, on dimensioning and on drafting technical specifications. Solid engineering competence goes with real effectiveness in implementing gearing solutions; this includes designing with innovative tools, planning production transparently and fabricating with ultra-modern equipment - adding up to your fastest and most productive path to your high-performance gear system from the experts.

All-round Professionals

We at J. S. rely on mutual appreciation, respect and loyalty in its relations with customers and employees alike. Apart from financial independence, sustainability is the foundation of our company.

Quality Assurance

We use exclusively materials and components of selected, consistent quality. External and in-house test guarantee the highest quality of gear system solutions.

Fast Fix Guarantee

We guarantee that your gear system will be serviced / maintained/ repaired as fast as possible. We fabricate all the replacement parts needed ourselves which provides the decisive advantage in speed and time.

One Contact Principle

At J. S. you talk to just one contact who will handle all your requests. He/she does not just supervise the entire service procedure but can also answer all your questions at any time.





VIDEO




E-CATALOGUE



WEBSITE


(An ISO 9001 : 2015 Certified Company)

GET IN TOUCH >

 51, Saundarya Industrial Park, Bakrol-Bujrang Village,
Tal.: Daskroi, Dist.: Ahmedabad-382 430. Gujarat, India.

 jsgears@jsgears.in

 www.jsgears.in

