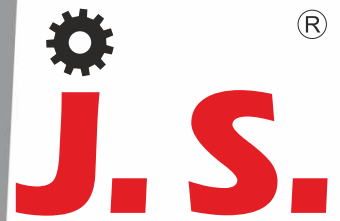
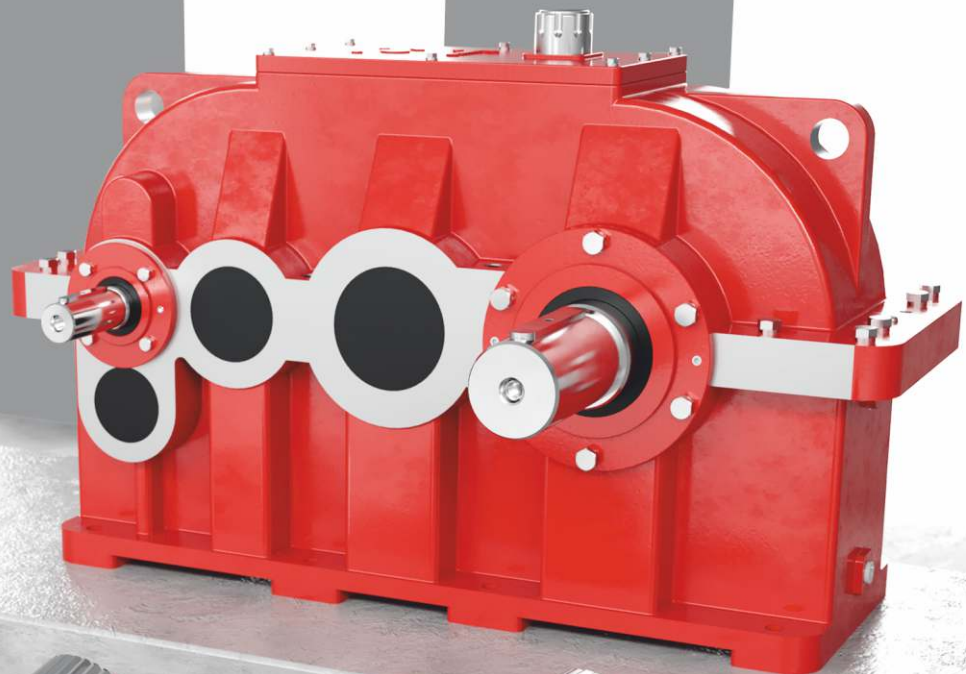


Your Specialist For Crane

Crane Duty Helical Gearbox



Since : 1990



Gearbox

Internal Composition

Oil Seal*

- ⚙ Input/output shafts incorporate double oil seals imported

Gear Case*

- ⚙ Super rigid housing of graded cast iron machine on High-Precision Machine.
- ⚙ Fabricated case available on request.

Assembly*

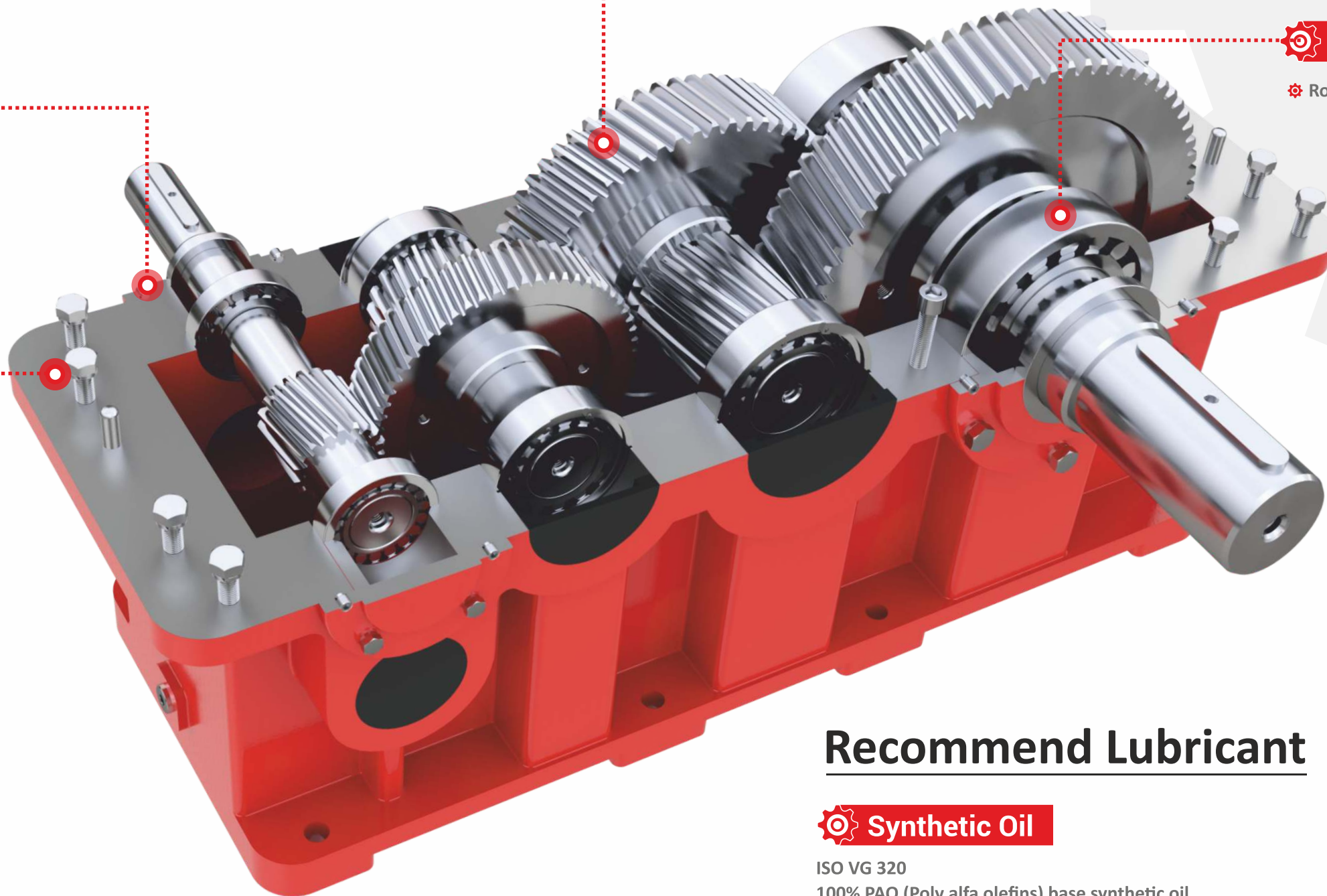
- ⚙ Gears and housing are assembled and test-run technicians after stringent QC.
- ⚙ Bearing temperature is 100% tested during the trial operation.
- ⚙ Noise is kept below the standard 85dB.

Gears*

- ⚙ Made from high graded alloy steel case harden (HRC-55 to 60) and precision profile ground. Accuracy DIN 6*/ DIN 7*

Bearing*

- ⚙ Roller Bearings FAG/Timken (on request)



Recommend Lubricant

⚙ Synthetic Oil

- ISO VG 320
- 100% PAO (Poly alfa olefins) base synthetic oil
- ⚙ Up to 4 times longer oil life compared to any conventional mineral oil.
- ⚙ Deliver energy efficiency
- ⚙ Observe temperature reduction.
- ⚙ Increased gear & bearing life.
- Lesser evaporation due to lower velocity

⚙ Mineral Oil

- ISO VG 320/460
- ⚙ Changing period : 4500 Hours

Infrastructure

UNIT 1

9,000
sq. feet



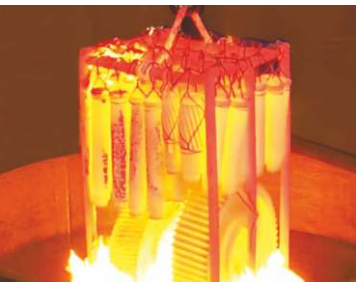
UNIT 2

10,000
sq. feet

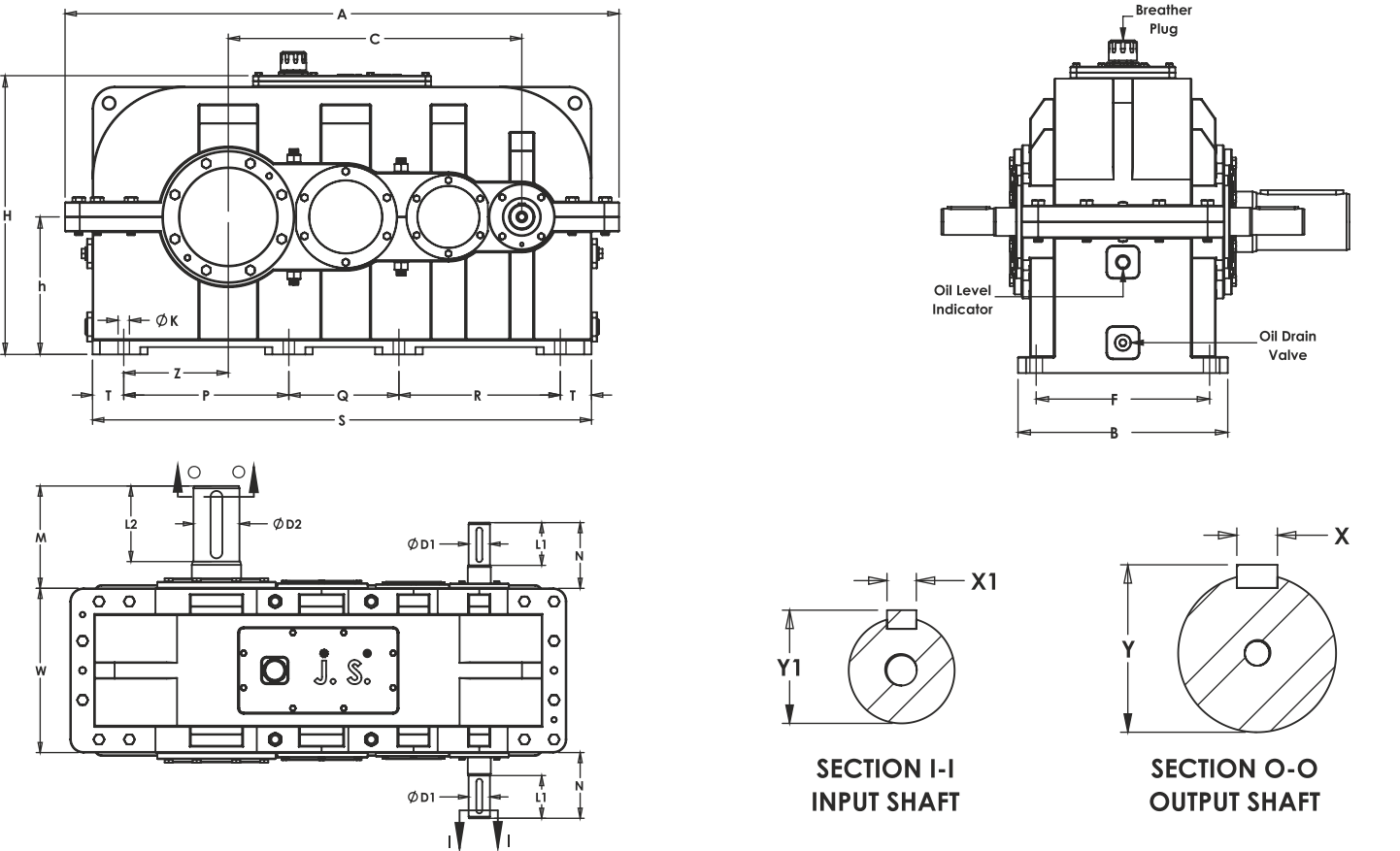
Plant and Machinery

- ⚙ CNC Turning Machine (Upto 1 Meter Length) - 3 NOS
- ⚙ Gear Hobbing Machine (Upto 1000 MM Diameter) (Germany) - 5 NOS
- ⚙ Gear Grinding Machine (Upto 700 MM Diameter) (Germany and Swiss) - 5 NOS
- ⚙ HMC Machine (Japan) - 2 NOS
- ⚙ Boring Machine - 3 NOS
- ⚙ Round Bandsaw Machine (Upto DIA 420) - 2 NOS
- ⚙ Conventional Lathe Machine - 4 NOS

- ⚙ Radial Drill Machine (HMT Make) - 2 NOS
- ⚙ Slotting Machine (400 MM Stoke) - 2 NOS
- ⚙ Measuring Instruments - Mitutoyo Make
- ⚙ Milling Machine for Heavy Key Way (Germany) - 2 NOS
- ⚙ Surface Grinding Machine - 1 NOS
- ⚙ In-house Paint Shop
- ⚙ In-house Fabrication Work
- ⚙ Heavy Duty Hydraulic Press - 4 NOS
- ⚙ EOT Crane (5 Ton Capacity) - 3 NOS



Three Stage Gearboxes-HC Series



Available Ratio 25: 1 to 160: 1																				THREE STAGE GEARBOXES									
Type	Input Shaft		Output Shaft		Dimensions (mm)																		Average Weight*	Oil Qty*					
Model	ØD1	L1	ØD2	L2	C	A	H	h	Z	T	P	Q	R	S	W	B	F	N	M	ØK	X1	Y1	X	Y	Kg	Ltr			
HC-250	24	50	42	70	250	475	245	135	87.5	25	350	N/A	N/A	400	160	168	140	72	98	14	8	27.5	12	45.5	50	4			
HC-300	28	60	48	80	300	535	270	135	45	30	105	115	90	340	180	190	150	70	90	14	8	31.5	14	52	70	5			
HC-350	28	80	55	100	350	650	350	180	135	25	220	135	165	570	245	255	215	110	125	16	8	31.5	16	59.5	140	10			
HC-425	38	80	70	105	425	760	415	210	145	35	230	N/A	380	680	270	300	250	130	135	21	10	41.5	20	75	250	15			
HC-500	48	100	90	150	500	885	485	250	140	55	250	195	240	795	295	295	245	135	185	21	14	52	25	95.5	350	22			
HC-550	45	120	95	170	550	1000	540	280	165	55	280	210	280	880	395	380	315	155	220	20	14	49	25	100.5	550	30			
HC-650	50	120	105	200	650	1190	665	355	220	55	360	250	335	1055	395	395	340	155	260	22	14	54	28	111.5	800	50			
HC-725	60	120	125	200	725	1330	690	350	255	50	410	280	400	1190	440	440	370	175	275	28	18	64.5	32	132.5	1000	60			
HC-800	65	130	140	230	800	1510	760	375	285	85	450	300	440	1360	500	520	430	200	310	31	18	69.5	36	148.5	1350	75			
HC-900	75	140	170	250	900	1675	840	415	315	90	505	330	480	1495	590	610	510	205	350	37	20	80	40	179.5	1500	170			
HC-1000	80	150	200	300	1000	1810	855	430	315	85	525	380	535	1610	640	640	530	220	395	38	22	85.5	45	210.5	2100	245			

Note :

All Dimensions are in mm.

*Condition Apply

Shaft centering according to DIN 332, shape DS.

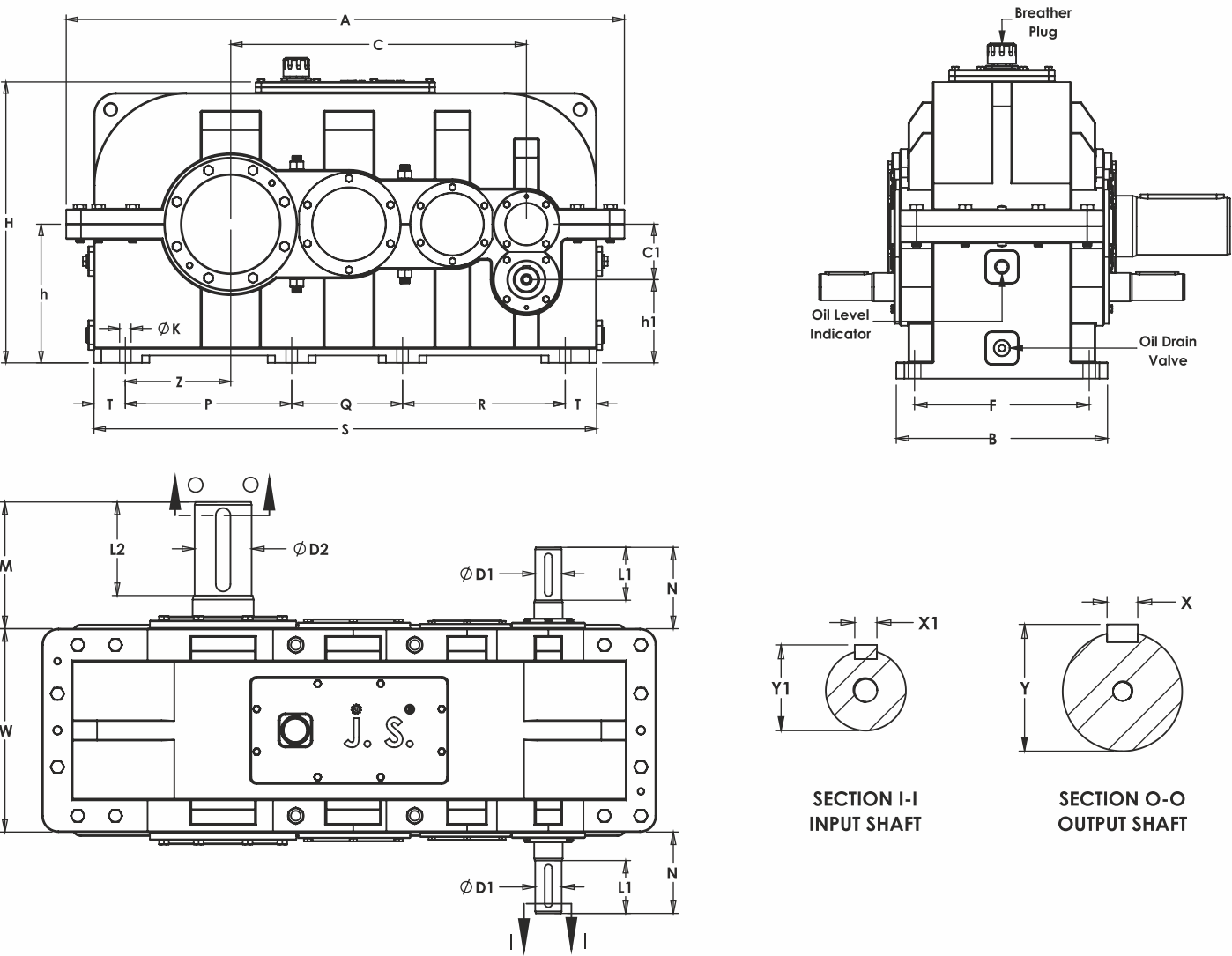
Key & Keyway according to DIN 6885

SCAN ME

Selection Table

RATIO	I/P RPM	O/P RPM	THREE STAGE (HC) HELICAL GEAR SIZE (INPUT KW RATING)											
In	N1	N2	250	300	350	425	500	550	650	725	800	900	1000	
20	1500	75	16.8	---	---	---	---	144.8	---	---	384.8	---	---	
	1000	50	11.68	---	---	---	---	98.4	---	---	290.4	---	---	
22	1500	68.2	16.64	---	---	---	---	130.4	---	---	350.4	---	---	
	1000	45.5	11.04	---	---	---	---	91.2	---	---	264.8	---	---	
25	1500	60	14.16	19.2	26.4	62	83.2	120	166.4	205.6	330.4	450.4	603.2	
	1000	40	9.28	12.8	16.8	42	56.8	83.2	114.4	136.8	255.2	315.2	404.8	
28	1500	53.6	12.8	16.8	23.2	56	75.2	104.8	144.8	184.8	310.4	404.8	544	
	1000	35.7	8.4	11.2	14.4	38	54.4	72	102.4	123.2	230.4	284.8	363.2	
31.5	1500	47.6	11.2	15.2	20	48	71.2	95.2	130.4	164	290.4	384.8	480.8	
	1000	31.7	7.6	10.4	13.6	33	47.2	63.2	87.2	109.6	200	255.2	320.8	
35.5	1500	42.3	9.6	13.6	18.4	46	61.6	87.2	123.2	148	280	344.8	434.4	
	1000	28.2	6.72	8.8	12	30	41.6	58.4	82.4	99.2	184.8	230.4	289.6	
40	1500	37.5	8.8	12	16.8	43	56	78.4	108.8	132.8	240	310.4	387.2	
	1000	25	5.92	7.92	12	28	37.6	52	72.8	88.8	164.8	204.8	258.4	
45	1500	33.3	8	10.4	14.4	36	50.4	68.8	97.6	119.2	220	275.2	348.8	
	1000	22.2	5.36	7.04	10.4	25	33.6	46.4	65.6	80	150.4	180	232.8	
50	1500	30	7.04	9.6	12	32	44.8	62.4	89.6	104	200	244.8	304	
	1000	20	4.72	6.32	8.8	22	29.6	43.2	60	69.6	135.2	164.8	203.2	
56	1500	26.8	6.4	8.8	11.2	28	39.2	55.2	79.2	93.6	175.2	220	271.2	
	1000	17.9	4.24	5.68	7.68	19	27.2	38.4	52.8	62.4	120	144.8	180.8	
63	1500	23.8	5.52	7.52	9.6	24	35.2	47.2	65.6	84	150.4	195.2	244.8	
	1000	15.9	3.6	5.04	6.08	16	24	31.2	43.2	56	104.8	130.4	163.2	
71	1500	21.1	5.28	6.72	8	21	32	41.6	58.4	79.2	135.2	175.2	216	
	1000	14.4	3.44	4.48	5.68	14	21.6	28	39.2	52.8	92	115.2	144	
80	1500	18.8	4.32	5.92	7.28	19	28.8	36	55.2	70.4	120	155.2	206.4	
	1000	12.5	2.88	4	5.2	13	19.2	24	34.4	47.2	82.4	100	137.6	
90	1500	16.7	4.16	5.28	6.8	17	25.6	32.8	46.4	63.2	112	140	184	
	1000	11.1	2.72	3.6	4.72	11	17.6	21.6	31.2	42.4	75.2	92	122.4	
100	1500	15	----	4.72	6.8	17	22.4	28.8	44	56.8	104.8	134.4	165.6	
	1000	10	----	3.2	4.72	11	15.2	19.2	29.6	37.6	70.4	89.6	110.4	
112	1500	13.4	----	4.24	5.92	15	20.8	25.6	38.4	49.6	97.6	115.2	146.4	
	1000	8.9	----	2.8	4.08	9.6	13.6	17.6	25.6	32.8	65.6	75.2	97.6	
120	1500	12.5	----	3.84	4.4	13	17.6	22.4	35.2	45.6	90.4	105.6	137.6	
	1000	8.3	----	2.48	3.04	8	12	15.2	22.4	29.6	60.8	65.6	88	
140	1500	10.7	----	3.36	3.2	9.6	14.4	20	32	40	83.2	96	128	
	1000	7.1	----	2.24	2.56	6.4	9.6	13.6	19.2	25.6	55.2	60.8	78.4	

Four Stage Gearboxes-HD Series



Available Ratio 140:1 to 560:1																									FOUR STAGE GEARBOXES									
Type	Input Shaft		Output Shaft		Dimensions (mm)																				AVERAGE WEIGHT*	Oil Qty*								
MODEL	ØD1	L1	ØD2	L2	C	A	H	h	C1	h1	Z	T	P	Q	R	S	W	B	F	N	M	ØK	X1	Y1	X	Y	Kg	Ltr						
HD-500	34	75	90	150	500	885	485	250	90	160	140	55	250	195	240	795	295	295	245	115	185	21	10	37.5	25	95.5	415	22						
HD-550	35	80	95	170	550	1000	540	280	100	180	165	55	280	210	280	880	395	380	315	120	220	20	10	38.5	25	100.5	580	30						
HD-650	35	80	105	200	650	1190	665	355	130	225	220	55	360	250	335	1055	395	395	340	130	260	22	10	38.5	28	111.5	850	50						
HD-725	45	100	125	200	725	1330	690	350	150	200	255	50	410	280	400	1190	440	440	370	145	275	28	14	49	32	132.5	1070	60						
HD-800	60	130	140	230	800	1510	760	375	150	225	285	85	450	300	440	1360	500	520	430	175	310	31	18	64.5	36	148.5	1560	75						
HD-900	70	140	170	250	900	1675	840	415	180	235	315	90	505	330	480	1495	590	610	510	205	350	37	20	75	40	179.5	1650	170						
HD-1000	75	150	200	300	1000	1810	855	430	200	230	315	85	525	380	535	1610	640	640	530	220	395	38	20	80	45	210.5	2800	245						

Note :

All Dimensions are in mm.

*Condition Apply

- ⚙ Shaft centering according to DIN 332, shape DS.
- ⚙ Key & Keyway according to DIN 6885

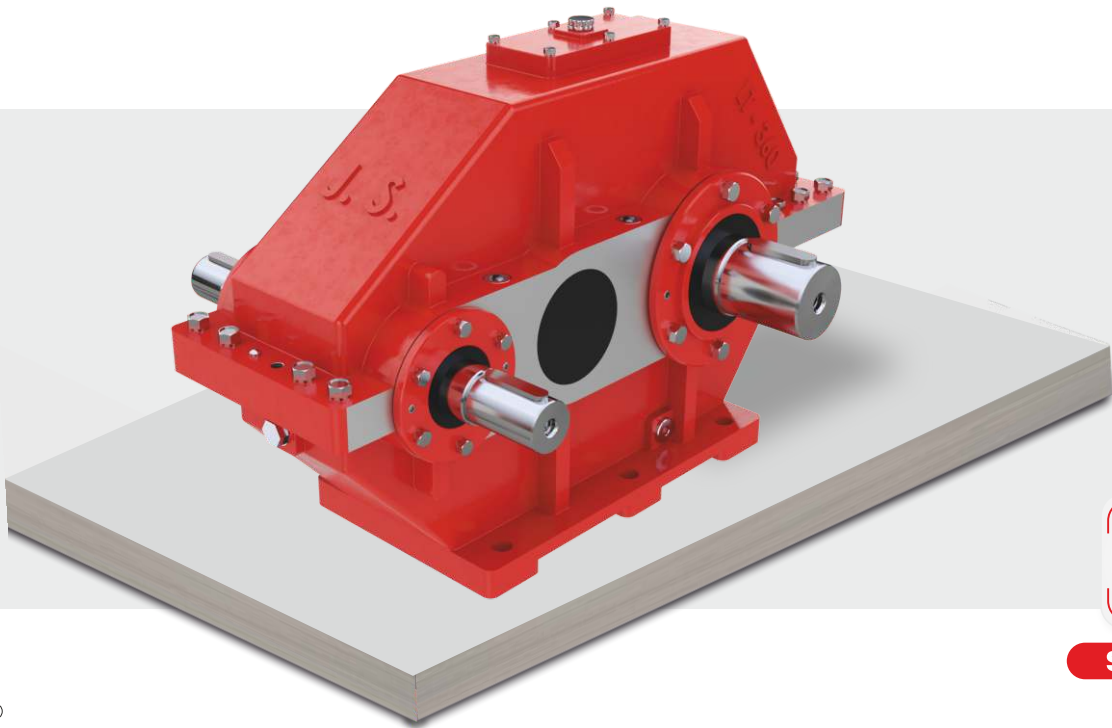
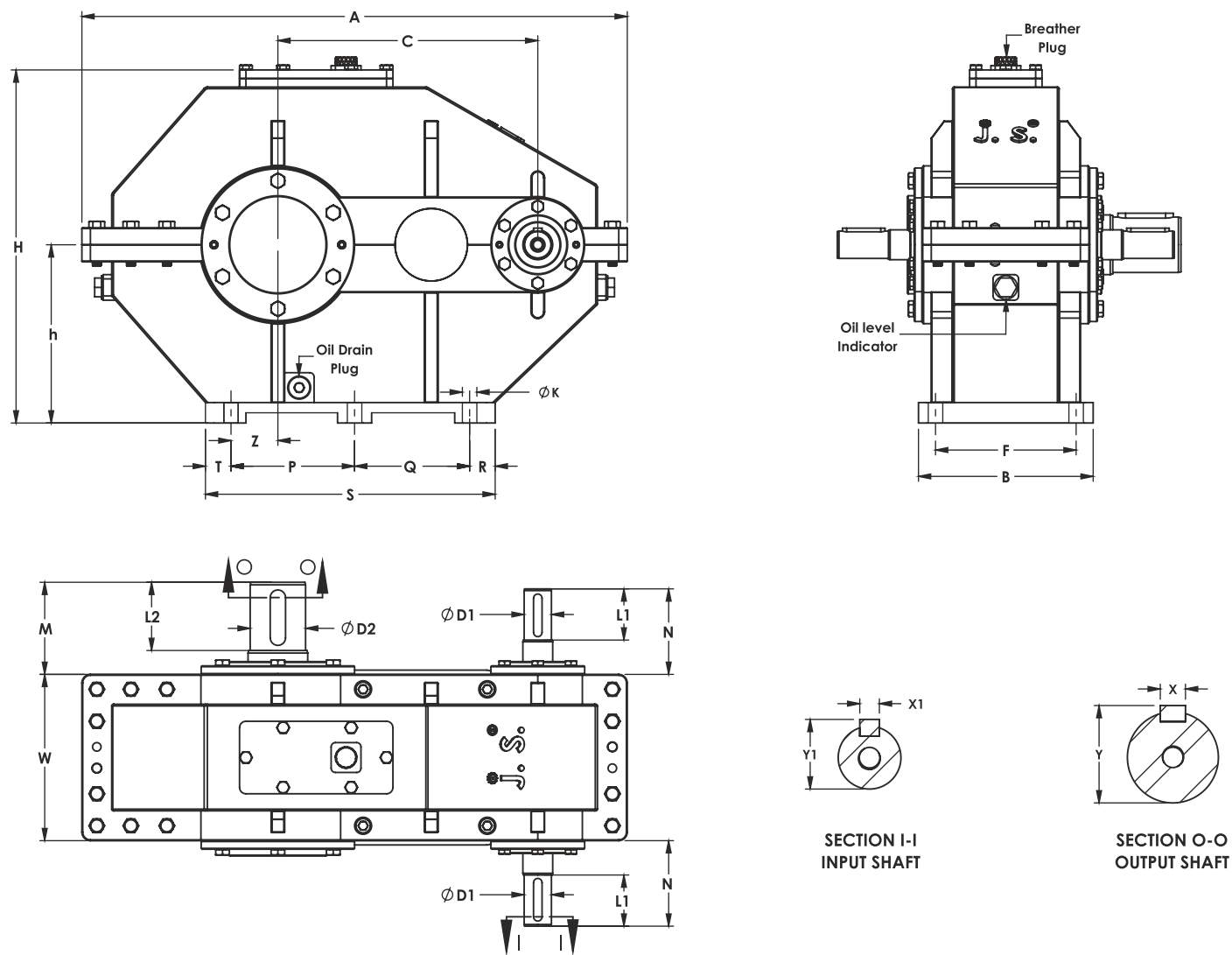


SCAN ME

Selection Table

RATIO	I/P RPM	O/P RPM	FOUR STAGE (HD) HELICAL GEAR SIZE (INPUT KW RATING)						
In	N1	N2	500+90	550+100	650+130	725+150	800+150	900+180	1000+200
90	1500	16.7	---	36	---	---	110.4	---	---
	1000	11.1	---	24	---	---	73.6	---	---
100	1500	15	---	32.8	---	---	100	---	---
	1000	10	---	21.6	---	---	66.4	---	---
112	1500	13.4	---	28.8	---	---	91.2	---	---
	1000	8.9	---	20	---	---	59.2	---	---
125	1500	12	16.8	26.4	34.4	44	80.8	96.8	121.6
	1000	8	11.2	16.8	22.4	29.6	52.8	64	80.8
140	1500	10.7	16.8	23.2	30.4	43.2	72	87.2	106.4
	1000	7.1	11.2	16	20	28.8	47.2	56.8	71.2
160	1500	9.4	14.4	20	27.2	39.2	63.2	76	96.8
	1000	6.3	9.6	14.4	18.4	26.4	42.4	51.2	64.8
180	1500	8.3	12	19.2	24.8	31.2	56.8	68.8	80.0
	1000	5.6	7.84	12	16.8	20.8	38.4	46.4	54.4
200	1500	7.5	10.4	15.2	22.4	27.2	51.2	62.4	73.8
	1000	5	7.12	10.4	14.4	18.4	34.4	40.8	48.8
224	1500	6.7	9.6	14.4	19.2	24	44.8	55.2	65.6
	1000	4.5	6.4	8.8	13.6	16	30.4	36.8	43.2
250	1500	6	8	12	17.6	21.6	40	48	56.8
	1000	4	5.6	8.8	12	14.4	27.2	32	38.4
280	1500	5.4	7.6	11.2	15.2	20	36	44	52
	1000	3.6	5.12	7.52	10.4	12.8	24	28.8	34.4
315	1500	4.8	6.72	9.6	12.8	17.6	32	39.2	46.4
	1000	3.2	4.48	6.48	9.6	12	20.8	24.8	29.6
355	1500	4.2	5.84	8.8	12.8	16	28.8	35.2	40.8
	1000	2.8	3.92	6	8	10.4	19.2	23.2	27.2
400	1500	3.8	5.36	8	11.2	14.4	26.4	31.2	36
	1000	2.5	3.6	5.04	7.52	9.6	16.8	20.0	24
450	1500	3.3	5.04	7.52	9.6	12.8	20.8	28.8	36.8
	1000	2.2	3.36	5.04	6.64	8	14.4	19.2	24.8
500	1500	3	4.56	7.12	8.8	11.2	---	25.6	29.6
	1000	2	3.04	4.72	6	7.52	---	17.6	20
560	1500	2.7	3.92	6.64	8	10.4	---	22.4	26.4
	1000	1.8	2.64	4.32	5.28	6.72	---	15.2	17.6

Two Stage (LT) Helical Gear



SCAN ME

Selection Table

RATIO	I/P RPM	O/P RPM	TWO STAGE (LT) HELICAL GEAR SIZE (INPUT KW RATING)		
In	N1	N2	250	305	360
6	1500	250	4	6	9
	1000	166.6	4	6	9
8	1500	187.5	4	6	9
	1000	125	4	6	9
10	1500	150	3.5	5	7.5
	1000	100	3.5	5	7.5
12	1500	125	3	5	7
	1000	83.3	3	5	7
14	1500	107.1	3	4	6.5
	1000	71.4	3	4	6.5
16	1500	93.7	2.8	4	6
	1000	62.5	2.8	4	6
18	1500	83.3	2.5	3.5	5
	1000	55.5	2.5	3.5	5
20	1500	75	2	3.5	4.5
	1000	50	2	3.5	4.5
22	1500	68.1	1.8	3	4
	1000	45.4	1.8	3	4
26	1500	57.6	1.5	3	4
	1000	38.4	1.5	3	4

Type	Input Shaft		Output Shaft		Dimensions (mm)																			Average Weight*	Oil Qty*	
Model	ØD1	L1	ØD2	L2	C	A	H	h	Z	T	P	Q	R	S	W	B	F	N	M	ØK	X1	Y1	X	Y	Kg	Ltr
LT-250	32	60	58	80	250	540	325	165	55	25	120	120	35	300	195	220	180	90	100	17	10	35.5	16	62.5	80	3.5
LT-305	32	60	65	80	305	640	415	210	55	30	145	135	30	340	195	205	165	100	110	17	10	35.5	18	69.5	120	5
LT-360	45	75	75	90	360	735	460	230	60	40	160	185	40	425	230	250	200	110	125	20	14	49	20	80	190	7

Note :

All Dimensions are in mm.
*Condition Apply

⚙ Shaft centering according to DIN 332, shape DS.
⚙ Key & Keyway according to DIN 6885

Service & Maintenance



Anyone deciding in favour of J. S. high-performance gear unit automatically decides in favour of state- of-the-art engineering, efficient order handling and proven workflows. The know-how gathered in the course of decades enables us to fulfil all our customers' special requirements in many different sectors – from plastics via food processing all the way to heavy industry and energy supply flexibly and customized. J. S. provides comprehensive advice on selecting the right gearing solution, on dimensioning and on drafting technical specifications. Solid engineering competence goes with real effectiveness in implementing gearing solutions; this includes designing with innovative tools, planning production transparently and fabricating with ultra-modern equipment – adding up to your fastest and most productive path to your high-performance gear system from the experts.

Our Core Strength



One Contact Principle



Quality Assurance



All-round Professionals



Sustainability Guarantee

All-round Professionals

We at J. S. rely on mutual appreciation, respect and loyalty in its relations with customers and employees alike. Apart from Financial independence, sustainability is the foundation of our company.

Fast Fix Guarantee

We guarantee that your gear system will be serviced / maintained/ repaired as fast as possible. We fabricate all the replacement parts needed ourselves which provides the decisive advantage in speed and time.

Quality Assurance

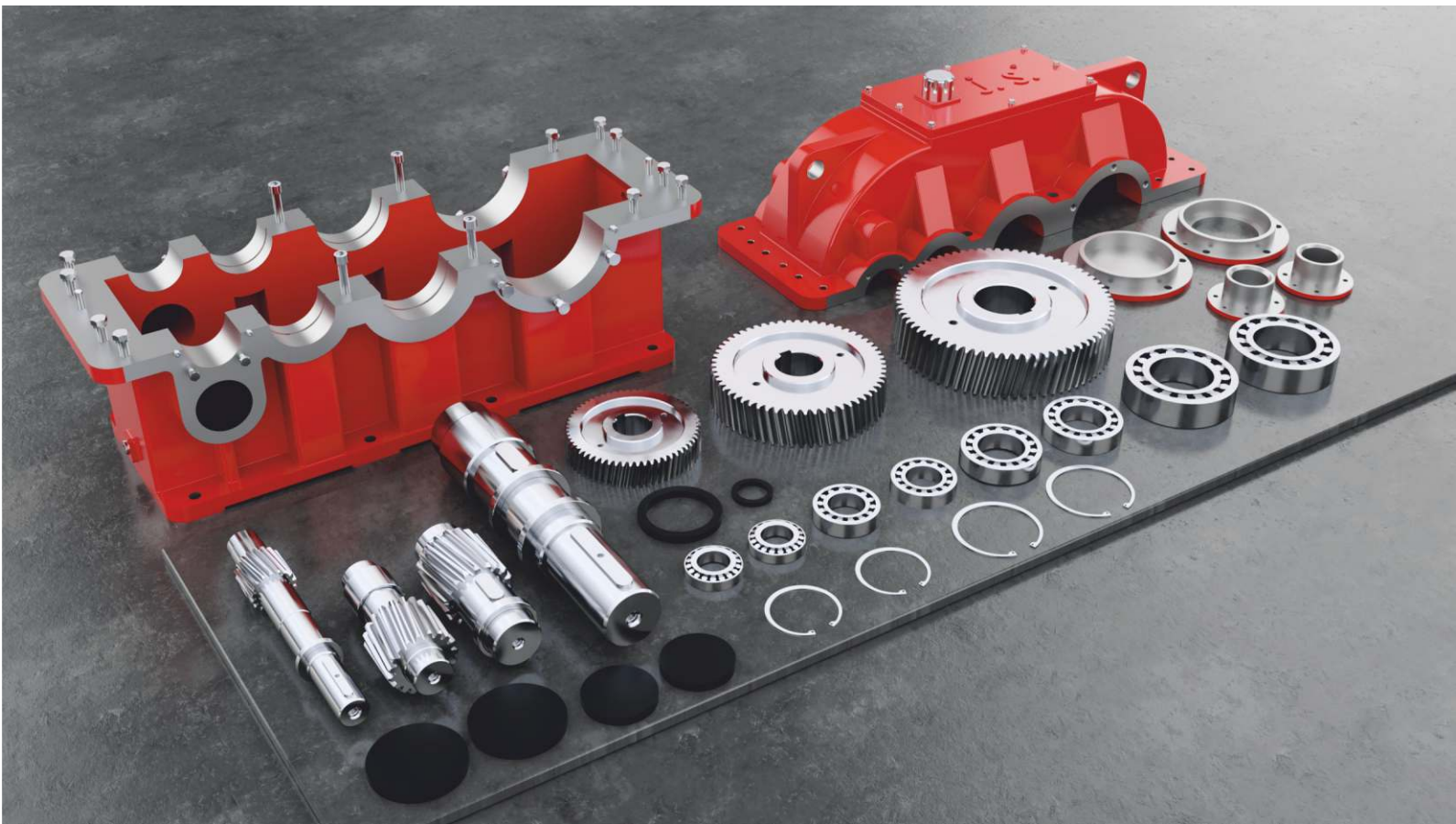
We use exclusively materials and components of selected, consistent quality. External and in-house test guarantee the highest quality of gear system solutions.

One Contact Principle

At J. S. you talk to just one contact who will handle all your requests. He/she does not just supervise the entire service procedure but can also answer all your questions at any time.



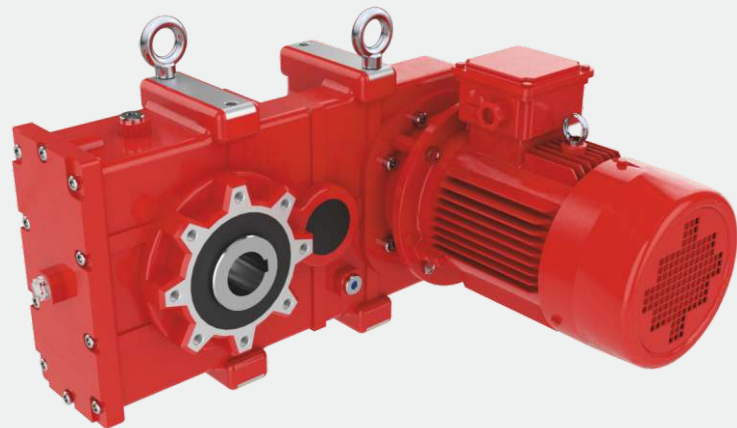
Extend the life of your GEARBOX



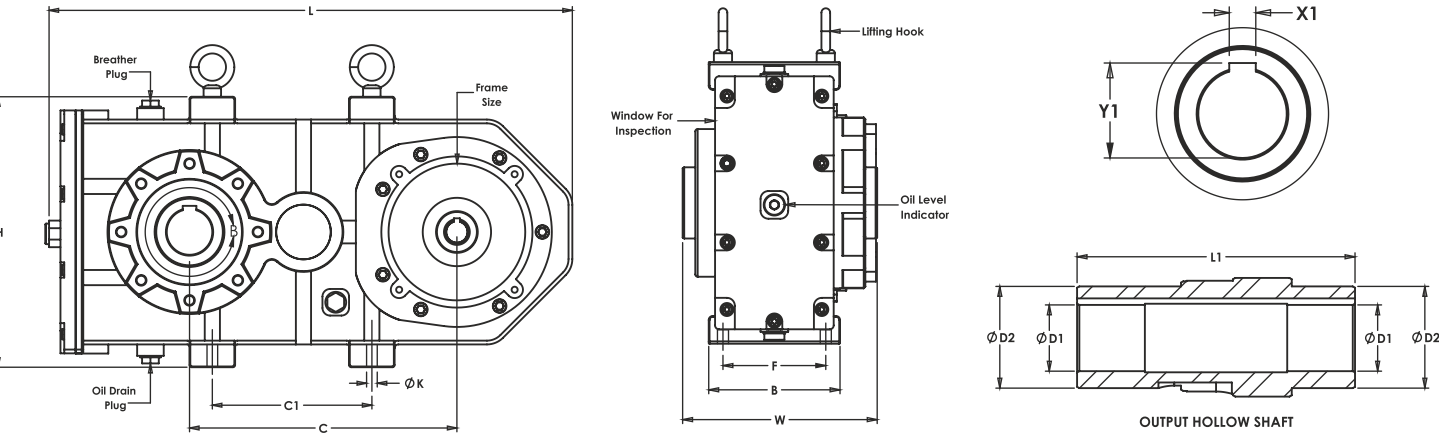
with
**Predictive
Maintenance**



HT-Series Gearboxes



Extra long center distance for
Hoisting Application



Type	Output Shaft				Dimensions (mm)									AVERAGE WEIGHT*	OIL QTY*
MODEL	ØD1	ØD2	L1	X1	Y1	L	H	C	C1	ØK	W	B	F	Kg	Ltr
HT-08	Ø60	Ø90	245	18	64.5	690	355	352	210	M16	230	165	130	135	10
HT-09	Ø70	Ø100	290	20	75	865	500	450	300	M16	290	240	165	180	15

Note :

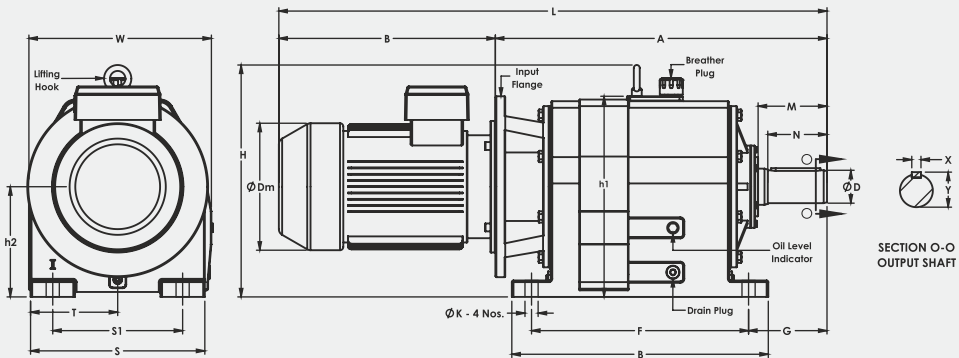
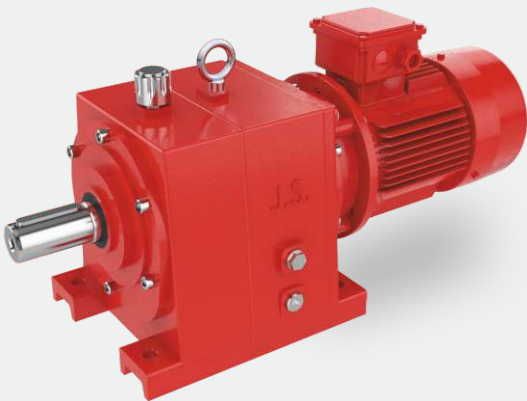
All Dimensions are in mm.
*Condition Apply

- Key & Keyway According to DIN 6885
- Harden & Profile Ground
- Shaft centering according to DIN 332, shape DS



SCAN ME

Inline Helical Geared Motor



Type	Output Shaft				Dimensions (mm)												AVERAGE WEIGHT	OIL QTY*
MODEL	ØD	N	X	Y	H	h1	h2	ØK	F	B	G	M	W	T	S	S1	Kg	Ltr
M-07	40	80	12	43.50	275	270	145	Ø19	285	325	105	95	285	130	260	190	75	4
M-08	50	100	14	54	400	330	190	Ø19	305	355	125	115	310	145	290	215	85	6
M-09	60	120	18	64.50	480	395	230	Ø23	365	430	155	140	370	170	340	250	150	9
M-10	70	140	20	75	570	485	265	Ø25	525	615	165	160	460	220	440	330	265	12
M-13	90	140	25	95.50	640	550	300	Ø30	555	655	195	170	510	245	490	380	375	20
M-14	100	180	28	106.50	705	610	335	Ø40	660	780	240	210	555	265	530	395	500	30

GEAR BOX		MOTOR FRAME SIZE														
		90S	90L	100L	112M	132S	132M	160M	160L	180M	180L	200L	225S	225M	250M	280S/M
MODEL	B	252	277	306	328	384	422	495	539	569	607	685	677	702	774	870
	ØDm	174	174	195	220	260	260	316	316	354	354	394	450	450	489	544
M-07	A	453	453	464	464	---	---	---	---	---	---	---	---	---	---	---
	L	705	730	770	792	---	---	---	---	---	---	---	---	---	---	---
M-08	A	---	---	469	469	490	490	---	---	---	---	---	---	---	---	---
	L	---	---	775	797	874	912	---	---	---	---	---	---	---	---	---
M-09	A	---	---	448	448	448	448	496	496	---	---	---	---	---	---	---
	L	---	---	754	776	832	870	991	1035	---	---	---	---	---	---	---
M-10	A	---	---	737	737	737	737	737	737	737	737	---	---	---	---	---
	L	---	---	1043	1065	1121	1159	1232	1276	1306	1344	---	---	---	---	---
M-13	A	---	---	---	---	850	850	850	850	850	850	850	850	850	---	---
	L	---	---	---	---	1234	1272	1345	1389	1419	1457	1535	1527	1552	---	---
M-14	A	---	---	---	---	---	---	1010	1010	1010	1010	1010	1010	1010	1010	1010
	L	—	—	—	—	—	—	1505	1549	1579	1617	1695	1687	1712	1784	1880

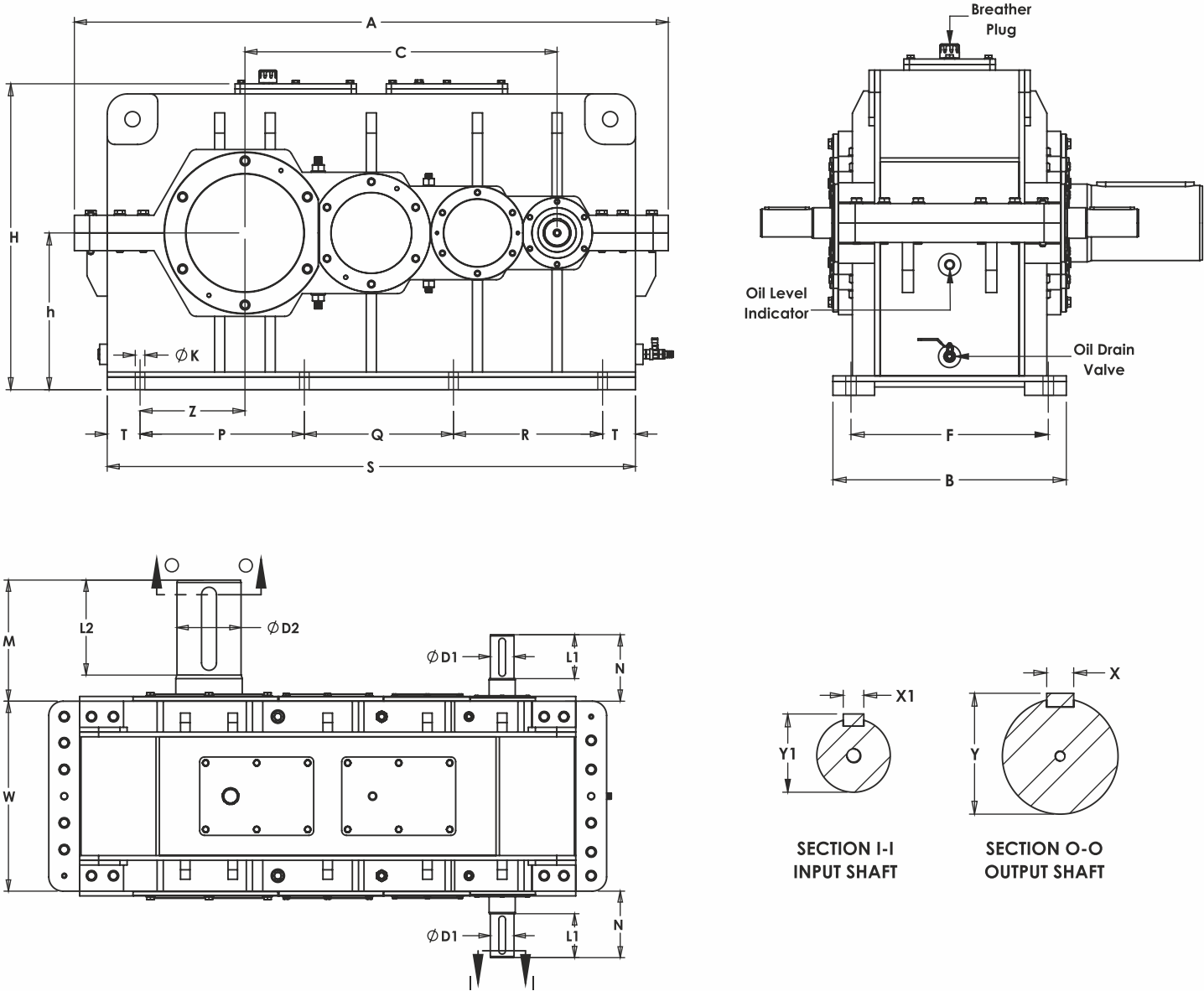
- Sizes** : Output shaft diameter - 40 mm, 50 MM, 60 mm, 70 mm, 90 mm, 100 mm, 120 mm, 150 mm
- Available version** : Input Hollow To Direct Motor Fitting. Input Solid Shaft, Foot Mounted & Vertical Mounting Option
- Case** : Cast Iron
- Power** : up to 40 KW Gearing with two & three reduction stages
- Ratio** : 10:1 to 100:1
- Paint** : Standard blue colour



SCAN ME

Fabricated Casing – Large Size

HC Series Three Stage Gearboxes



Type	Input Shaft		Output Shaft		Dimensions (mm)																		Average Weight*	Oil Qty*		
Model	ØD1	L1	ØD2	L2	C	A	H	h	Z	T	P	Q	R	S	W	B	F	N	M	ØK	X1	Y1	X	Y	Kg	Ltr
HC-1100 F	95	175	225	350	1100	2085	1000	520	315	175	600	350	600	1835	730	730	605	280	475	38	25	100.5	50	236.5	4100	210
HC-1235 F	100	185	270	400	1235	2350	1210	620	415	130	650	590	590	2090	800	840	710	280	510	38	28	106.5	63	284.5	5500	350
HC-1395 F	100	200	295	355	1395	2540	1285	645	480	125	680	680	680	2290	855	910	780	280	520	52	28	106.5	70	310.5	6500	400
HC-1600 F	110	200	300	450	1650	2890	1380	695	475	170	820	545	935	2640	880	960	800	300	555	47	28	116.5	70	315.5	8000	435

 **Note :**

All Dimensions are in mm.
*Condition Apply



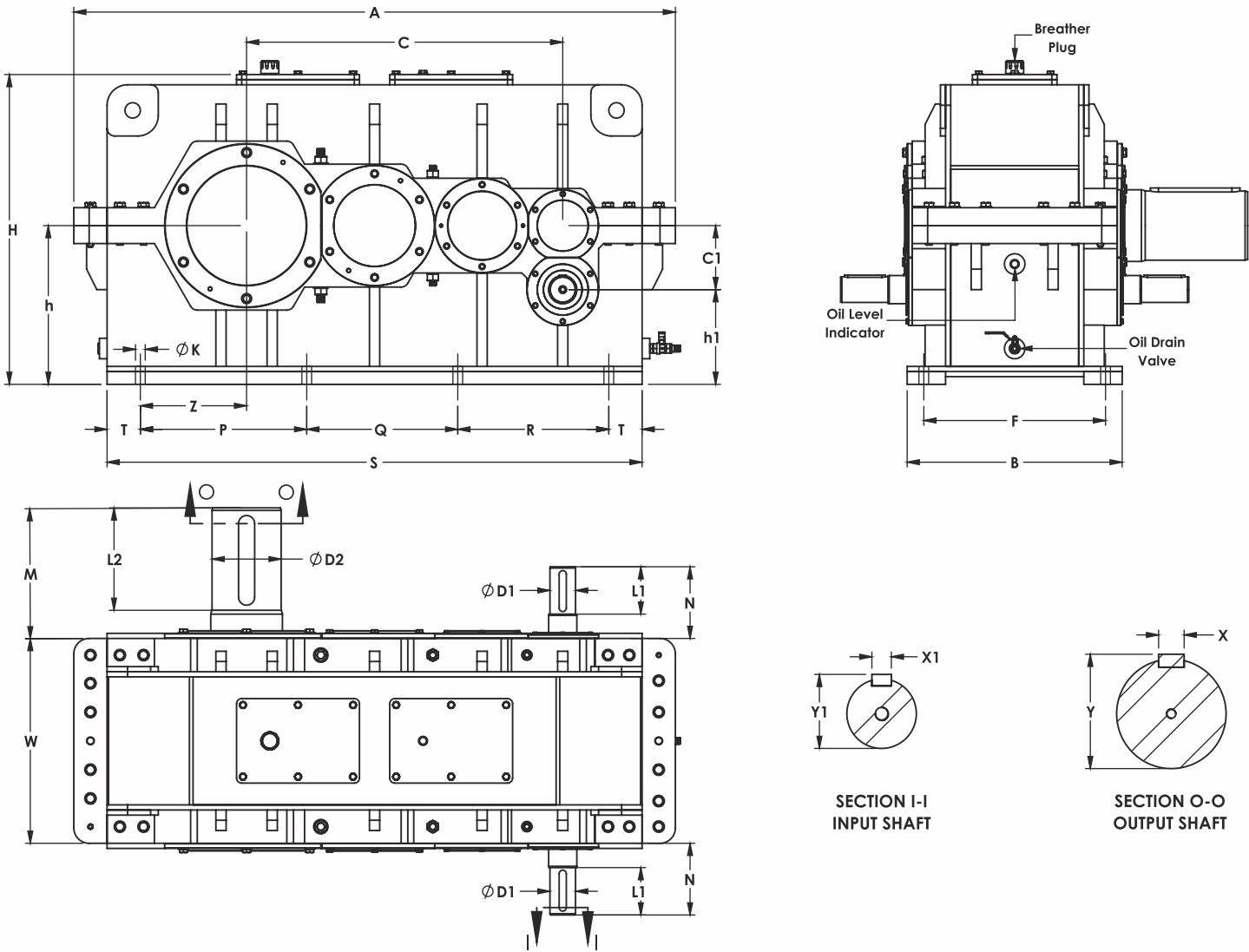
SCAN ME

Selection Table

RATIO	I/P RPM	O/P RPM	THREE STAGE (HC) HELICAL GEAR SIZE (INPUT KW RATING)			
			1100-F	1235-F	1395-F	1600-F
20	1500	75	---	---	---	---
	1000	50	---	---	---	---
22	1500	68.2	---	---	---	---
	1000	45.5	---	---	---	---
25	1500	60	772.5	1095	1447.5	2115
	1000	40	547.5	780	1012	1508
28	1500	53.6	682.5	968	1275	1830
	1000	35.7	480	683	893	1328
31.5	1500	47.6	615	878	1155	1695
	1000	31.7	435	615	803	1200
35.5	1500	42.3	577.5	825	1072	1590
	1000	28.2	382.5	540	412	1058
40	1500	37.5	525	743	968	1440
	1000	25	348.5	495	645	960
45	1500	33.3	465	660	862	1282
	1000	22.2	341	480	570	855
50	1500	30	412	585	772	1155
	1000	20	274	390	518	765
56	1500	26.8	375	525	690	1027
	1000	17.9	255	364	480	698
63	1500	23.8	330	472	608	915
	1000	15.9	225	322	420	615
71	1500	21.1	296	420	548	817
	1000	14.4	202	285	375	548
80	1500	18.8	262	372	480	720
	1000	12.5	180	255	338	487
90	1500	16.7	240	342	450	660
	1000	11.1	158	225	296	427
100	1500	15	217	308	405	585
	1000	10	142	202	270	390
112	1500	13.4	192	270	356	517
	1000	8.9	127	184	243	352
120	1500	12.5	162	225	300	442
	1000	8.3	112	162	210	300
140	1500	10.7	135	180	255	360
	1000	7.1	98	135	180	248

Fabricated Casing - Large Size

HD Series Four Stage Gearboxes



Type	Input Shaft		Output Shaft		Dimensions (mm)																				Average Weight*	Oil Qty*		
Model	ØD1	L1	ØD2	L2	C	A	H	h	C1	h1	Z	T	P	Q	R	S	W	B	F	N	M	ØK	X1	Y1	X	Y	Kg	Ltr
HD-1100 F	95	175	225	350	1100	2085	1000	520	225	295	315	175	600	350	600	1835	730	730	605	280	475	38	25	100.5	50	236.5	4500	210
HD-1235 F	70	150	270	400	1235	2350	1210	620	250	370	415	130	650	590	590	2090	800	840	710	240	510	38	20	75	63	284.5	5800	350
HD-1395 F	75	175	295	355	1395	2540	1285	645	225	420	480	125	680	680	680	2290	855	910	780	255	520	52	20	80	70	310.5	6800	400
HD-1600 F	110	200	300	450	1650	2890	1380	695	315	380	475	170	820	545	935	2640	880	960	800	300	555	47	28	116.5	70	315.5	8500	435

 **Note :**

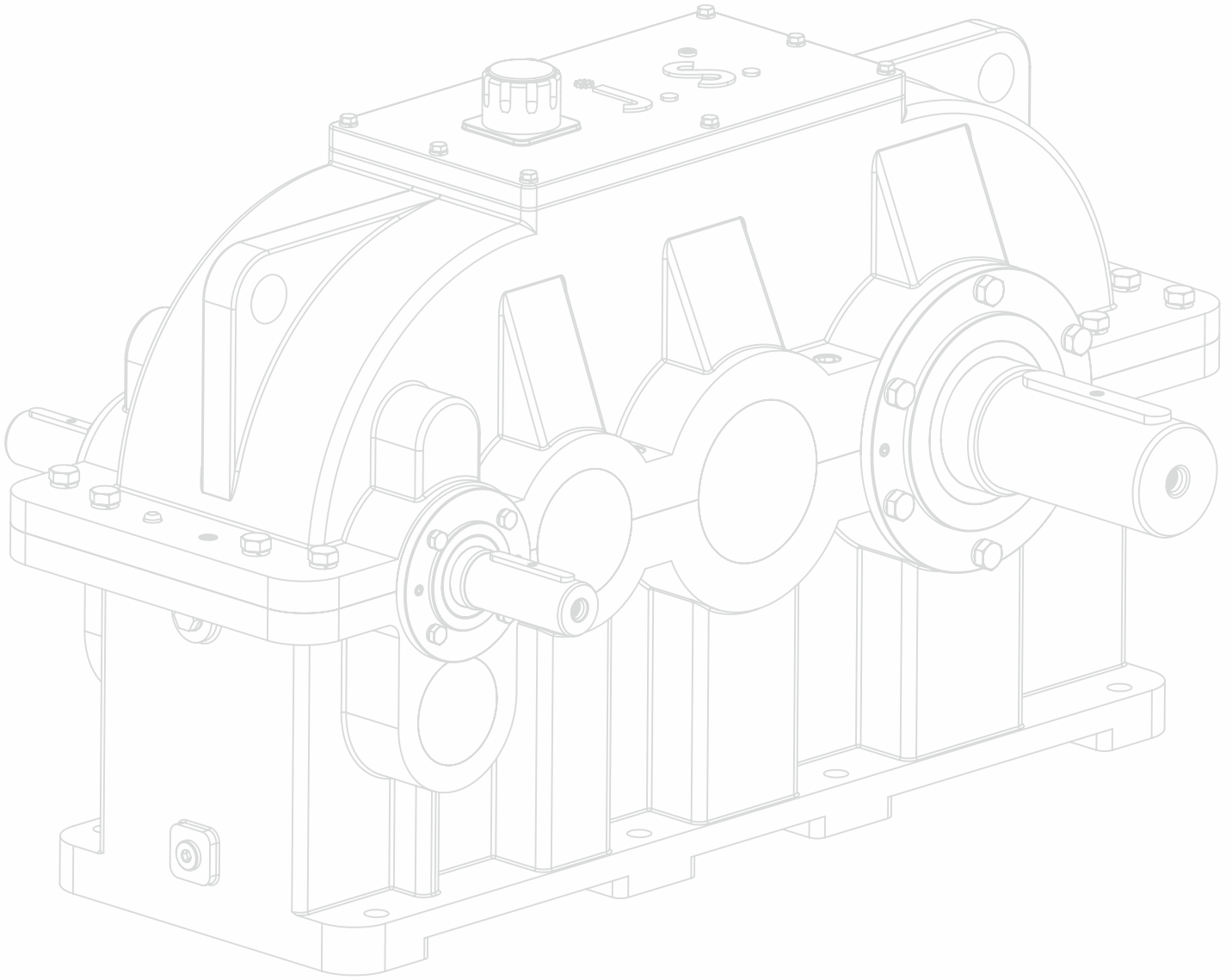
All Dimensions are in mm.
*Condition Apply



SCAN ME

Selection Table

RATIO	I/P RPM	O/P RPM	FOUR STAGE (HD) HELICAL GEAR SIZE (INPUT KW RATING)			
In	N1	N2	1100+225-F	1235+250-F	1395+225-F	1600+315-F
90	1500	16.7	---	---	---	---
	1000	11.1	---	---	---	---
100	1500	15	---	---	---	---
	1000	10	---	---	---	---
112	1500	13.4	191	270	360	518
	1000	8.9	128	180	240	353
125	1500	12	173	240	319	458
	1000	8	116	158	214	315
140	1500	10.7	154	218	285	413
	1000	7.1	101	143	188	274
160	1500	9.4	135	191	255	371
	1000	6.3	90	128	169	248
180	1500	8.3	120	169	221	326
	1000	5.6	79	112	150	218
200	1500	7.5	109	154	203	296
	1000	5	72	101	135	195
224	1500	6.7	98	139	180	266
	1000	4.5	65	90	120	176
250	1500	6	86	124	161	236
	1000	4	58	83	109	158
280	1500	5.4	75	109	143	206
	1000	3.6	50	71	94	139
315	1500	4.8	68	98	128	188
	1000	3.2	45	65	86	124
355	1500	4.2	62	86	116	169
	1000	2.8	40	56	74	109
400	1500	3.8	53	75	101	146
	1000	2.5	36	51	68	98
450	1500	3.3	49	69	90	131
	1000	2.2	32	45	61	86
500	1500	3	44	62	83	116
	1000	2	29	41	54	79
560	1500	2.7	38	53	71	105
	1000	1.8	26	37	49	71



 **J.S.** [®] Gear

(An ISO 9001 : 2015 Certified Company)

Get In Touch

 51, Saundarya Industrial Park, Bakrol-Bujrang Village,
Tal.: Daskroi, Dist.: Ahmedabad-382 430. Gujarat, India.

 jsgears@jsgears.in  www.jsgears.in



YOUTUBE



E-CATALOGUE



WEBSITE