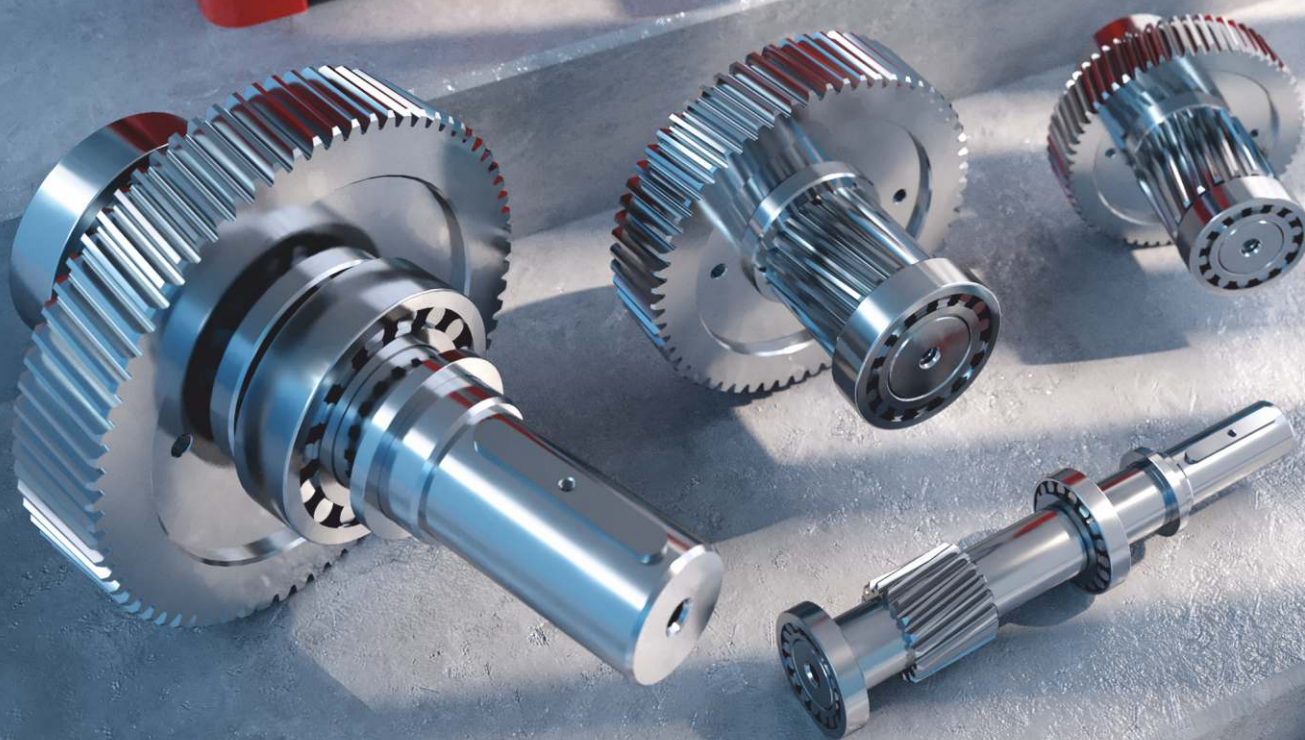
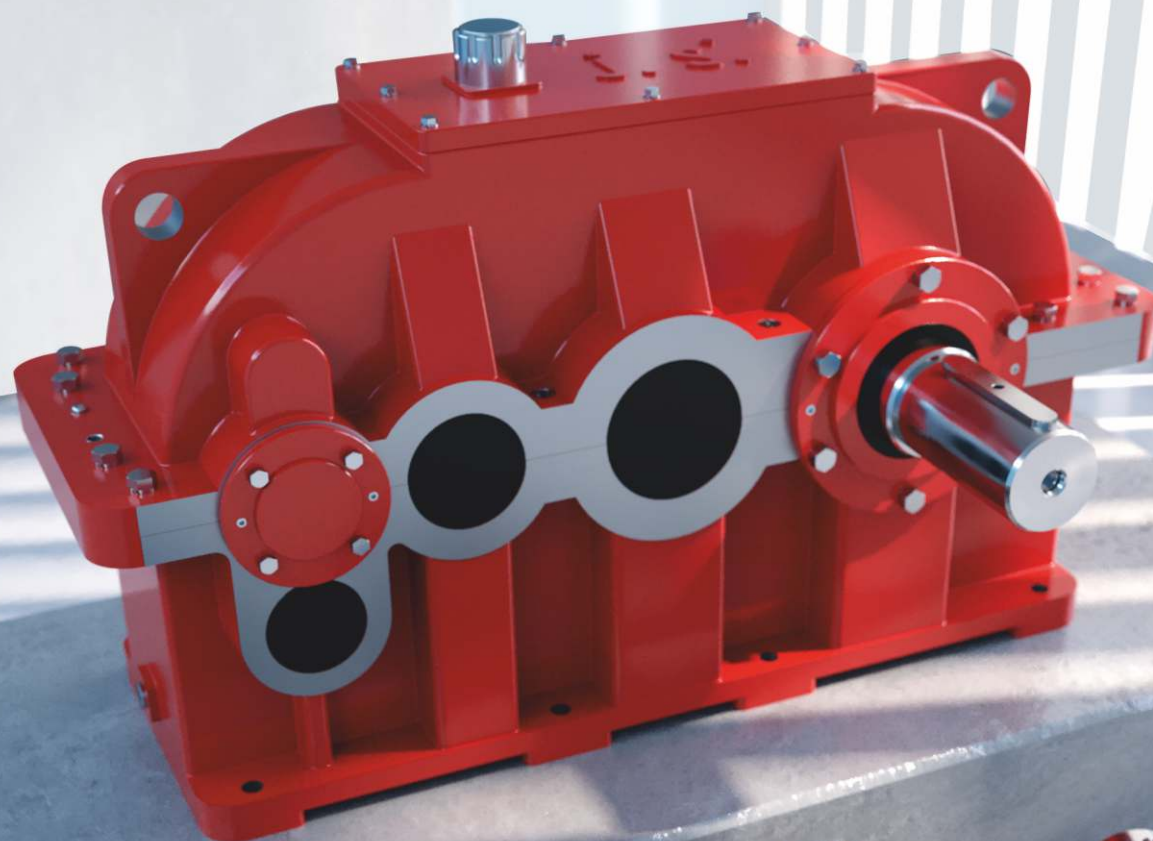


Your  
Specialist For

**Parallel Shaft Helical Gearbox**



Since : 1990





# Gearbox

## Internal Composition

### Oil Seal\*

- Input/output shafts incorporate double oil seals imported

### Gear Case\*

- Super rigid housing of graded cast iron machine on High-Precision Machine.
- Fabricated case available on request.

### Assembly\*

- Gears and housing are assembled and test-run technicians after stringent QC.
- Bearing temperature is 100% tested during the trial operation.
- Noise is kept below the standard 85dB.

### Gears\*

- Made from high graded alloy steel case harden (HRC-55 to 60) and precision profile ground. Accuracy DIN 6\* / DIN 7\*

### Bearing\*

- All Roller Bearings (FAG/Timken on Request)



## Recommend Lubricant

### Synthetic Oil

ISO VG 320  
100% PAO (Poly alfa olefins) base synthetic oil

- Up to 4 times longer oil life compared to any conventional mineral oil.
- Deliver energy efficiency
- Observe temperature reduction.
- Increased gear & bearing life.
- Lesser evaporation due to lower velocity

### Mineral Oil

ISO VG 320/460  
Changing period : 4500 Hours



# Infrastructure

## UNIT 1

9,000  
sq. feet



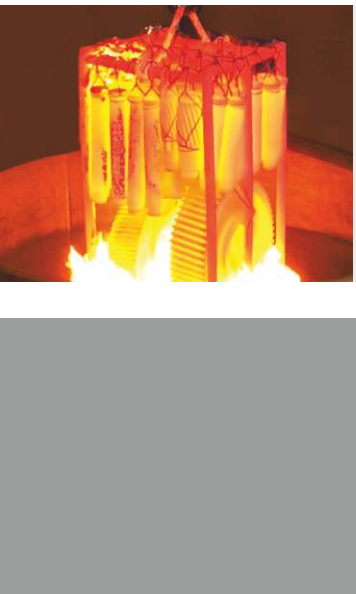
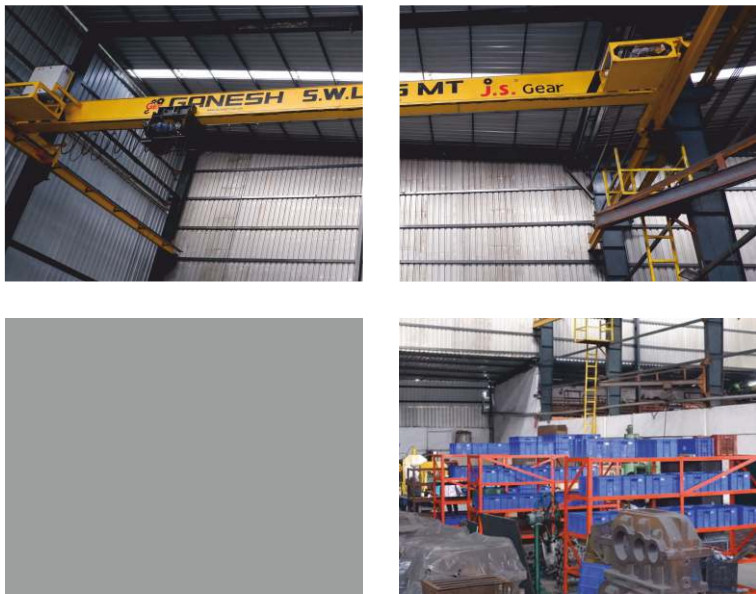
## UNIT 2

10,000  
sq. feet

## Plant and Machinery

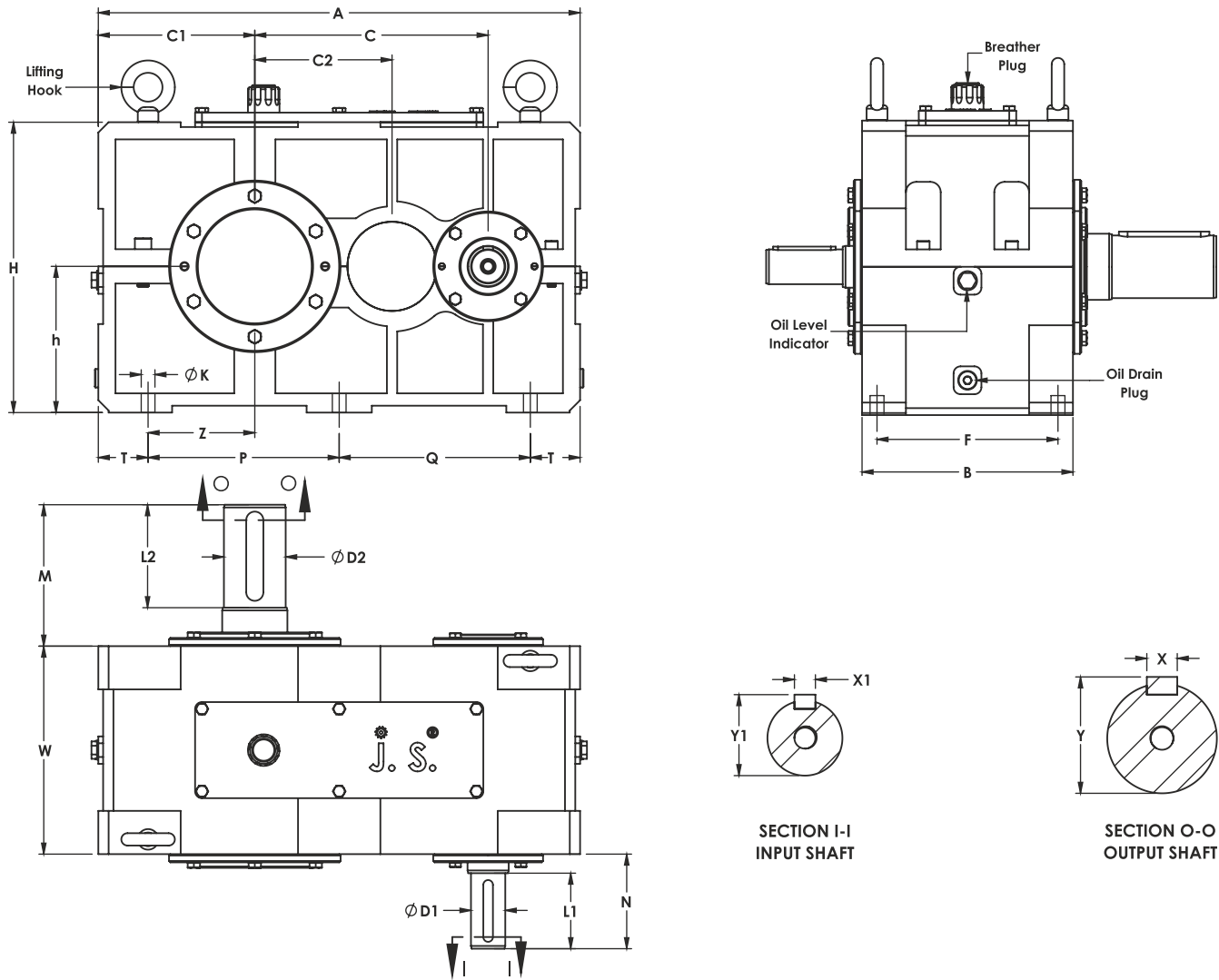
- ⚙ CNC Turning Machine (Upto 1 Meter Length) - 3 NOS
- ⚙ Gear Hobbing Machine (Upto 1000 MM Diameter) (Germany) - 5 NOS
- ⚙ Gear Grinding Machine (Upto 700 MM Diameter) (Germany and Swiss) - 5 NOS
- ⚙ HMC Machine (Japan) - 2 NOS
- ⚙ Boring Machine - 3 NOS
- ⚙ Round Bandsaw Machine (Upto DIA 420) - 2 NOS
- ⚙ Conventional Lathe Machine - 4 NOS

- ⚙ Radial Drill Machine (HMT Make) - 2 NOS
- ⚙ Slotting Machine (400 MM Stoke) - 2 NOS
- ⚙ Measuring Instruments - Mitutoyo Make
- ⚙ Milling Machine for Heavy Key Way (Germany) - 2 NOS
- ⚙ Surface Grinding Machine - 1 NOS
- ⚙ In-house Paint Shop
- ⚙ In-house Fabrication Work
- ⚙ Heavy Duty Hydraulic Press - 4 NOS
- ⚙ EOT Crane (5 Ton Capacity) - 3 NOS





# Two Stage Helical Gearboxes – SBH-S Series



| Type      | Input Shaft |     | Output Shaft |     | Dimensions (mm) |     |     |     |     |       |       |      |       |       |    |     |     |     |     |     |    |      | Average Weight* | Oil Qty* |     |     |
|-----------|-------------|-----|--------------|-----|-----------------|-----|-----|-----|-----|-------|-------|------|-------|-------|----|-----|-----|-----|-----|-----|----|------|-----------------|----------|-----|-----|
| Model     | ØD1         | L1  | ØD2          | L2  | A               | C   | C1  | C2  | H   | h     | Z     | T    | P     | Q     | ØK | B   | F   | W   | N   | M   | X1 | Y1   | X               | Y        | Kg  | Ltr |
| SBH-160 S | 45          | 105 | 75           | 110 | 580             | 270 | 190 | 160 | 360 | 180   | 130   | 60   | 230   | 230   | 19 | 260 | 220 | 260 | 130 | 145 | 14 | 49   | 20              | 80       | 200 | 15  |
| SBH-180 S | 50          | 110 | 80           | 120 | 635             | 305 | 220 | 180 | 395 | 197.5 | 153   | 67   | 250.5 | 250.5 | 20 | 270 | 220 | 270 | 160 | 170 | 14 | 54   | 22              | 85.5     | 230 | 20  |
| SBH-200 S | 50          | 110 | 90           | 150 | 700             | 340 | 230 | 200 | 420 | 210   | 155.5 | 72.5 | 278.5 | 278.5 | 20 | 305 | 260 | 305 | 140 | 205 | 14 | 54   | 25              | 95.5     | 460 | 30  |
| SBH-225 S | 60          | 140 | 110          | 175 | 790             | 385 | 260 | 225 | 485 | 245   | 180   | 80   | 315   | 315   | 25 | 330 | 270 | 330 | 180 | 240 | 18 | 64.5 | 28              | 116.5    | 630 | 50  |
| SBH-250 S | 70          | 140 | 125          | 185 | 950             | 430 | 320 | 250 | 540 | 270   | 235   | 87.5 | 386.5 | 386.5 | 27 | 395 | 335 | 395 | 175 | 245 | 20 | 75   | 32              | 132.5    | 750 | 70  |
| SBH-280 S | 75          | 140 | 130          | 200 | 1020            | 480 | 360 | 280 | 670 | 340   | 260   | 100  | 550   | 270   | 27 | 440 | 360 | 440 | 200 | 250 | 20 | 80   | 32              | 137.5    | 900 | 85  |

**Note :**

All Dimensions are in mm.

\*Condition Apply



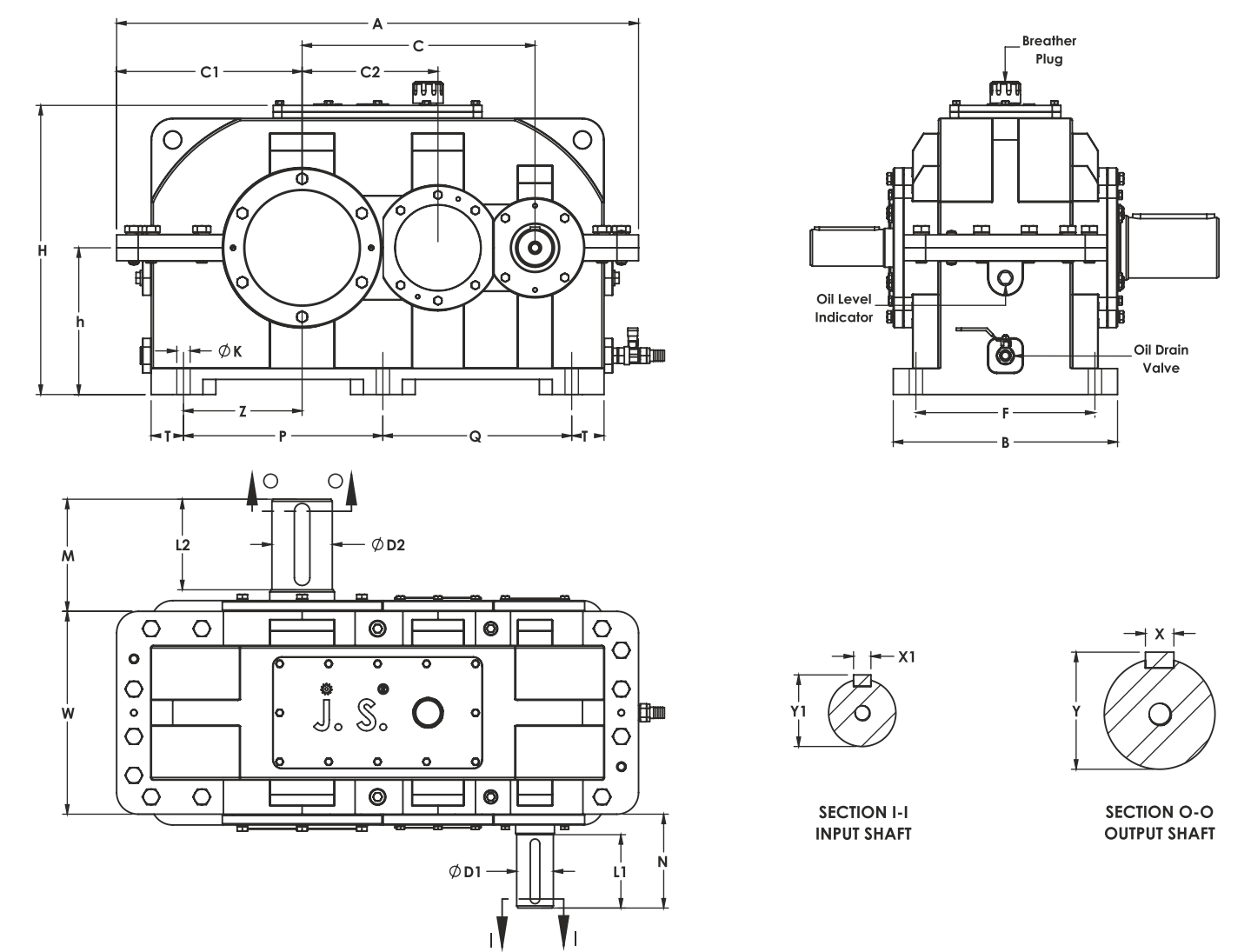
SCAN ME

# Selection Table

| RATIO | I/P RPM | O/P RPM | TWO STAGE HELICAL GEARBOX – SBH-S SERIES (INPUT KW RATING) |           |           |           |           |           |
|-------|---------|---------|--|-----------|-----------|-----------|-----------|-----------|
|       |         |         | SBH-160-S  | SBH-180-S | SBH-200-S | SBH-225-S | SBH-250-S | SBH-280-S |
| 6.3   | 1500    | 240     | 60   | 89        | 153       | 195       | 256       | 404       |
|       | 1000    | 160     | 41   | 60        | 103       | 132       | 173       | 274       |
|       | 750     | 120     | 31   | 46        | 79        | 101       | 132       | 209       |
| 7.1   | 1500    | 210     | 56   | 81        | 136       | 179       | 223       | 365       |
|       | 1000    | 140     | 38   | 55        | 92        | 121       | 151       | 247       |
|       | 750     | 105     | 29   | 42        | 70        | 93        | 115       | 188       |
| 8     | 1500    | 188     | 50   | 80        | 120       | 162       | 205       | 328       |
|       | 1000    | 125     | 34   | 54        | 81        | 110       | 139       | 222       |
|       | 750     | 94      | 26   | 41        | 62        | 84        | 106       | 169       |
| 9     | 1500    | 167     | 49   | 64        | 107       | 140       | 184       | 284       |
|       | 1000    | 111     | 33   | 43        | 73        | 95        | 124       | 192       |
|       | 750     | 83      | 26   | 33        | 55        | 72        | 95        | 147       |
| 10    | 1500    | 150     | 46   | 56        | 94        | 125       | 183       | 262       |
|       | 1000    | 100     | 31   | 38        | 64        | 85        | 124       | 178       |
|       | 750     | 75      | 24   | 29        | 49        | 65        | 94        | 135       |
| 11.2  | 1500    | 134     | 36   | 50        | 87        | 114       | 146       | 232       |
|       | 1000    | 89      | 24   | 34        | 59        | 77        | 99        | 157       |
|       | 750     | 67      | 19   | 26        | 45        | 59        | 75        | 120       |
| 12.5  | 1500    | 120     | 32   | 45        | 76        | 99        | 128       | 202       |
|       | 1000    | 80      | 22   | 31        | 52        | 67        | 87        | 137       |
|       | 750     | 60      | 17   | 23        | 39        | 51        | 66        | 104       |
| 14    | 1500    | 107     | 28   | 40        | 67        | 90        | 116       | 180       |
|       | 1000    | 71      | 19   | 27        | 46        | 61        | 79        | 122       |
|       | 750     | 53      | 14   | 21        | 35        | 47        | 60        | 93        |
| 16    | 1500    | 94      | 23   | 36        | 59        | 79        | 103       | 162       |
|       | 1000    | 62      | 16   | 24        | 40        | 54        | 70        | 110       |
|       | 750     | 47      | 12   | 19        | 31        | 41        | 53        | 84        |
| 18    | 1500    | 83      | 22   | 32        | 50        | 55        | 82        | 145       |
|       | 1000    | 56      | 15   | 22        | 34        | 37        | 55        | 98        |
|       | 750     | 41      | 12   | 17        | 26        | 28        | 42        | 75        |
| 20    | 1500    | 75      | 22   | 25        | 46        | 54        | 77        | 124       |
|       | 1000    | 50      | 15   | 17        | 31        | 37        | 52        | 84        |
|       | 750     | 38      | 11   | 13        | 24        | 28        | 40        | 64        |
| 22.4  | 1500    | 75      | 19   | 22        | 39        | 54        | 75        | 110       |
|       | 1000    | 50      | 13   | 15        | 26        | 36        | 51        | 75        |
|       | 750     | 38      | 10   | 12        | 20        | 28        | 39        | 57        |

# Two Stage Parallel shaft Helical Gearboxes

## SBH-S Series – Large Sizes



| Type      | Input Shaft |     | Output Shaft |     | Dimensions (mm) |     |     |     |      |     |     |     |     |     |    |     |     |     |     |     |    |      |    | Average Weight* | Oil Qty* |     |
|-----------|-------------|-----|--------------|-----|-----------------|-----|-----|-----|------|-----|-----|-----|-----|-----|----|-----|-----|-----|-----|-----|----|------|----|-----------------|----------|-----|
| Model     | ØD1         | L1  | ØD2          | L2  | A               | C   | C1  | C2  | H    | h   | Z   | T   | P   | Q   | ØK | B   | F   | W   | N   | M   | X1 | Y1   | X  | Y               | Kg       | Ltr |
| SBH-315 S | 85          | 170 | 140          | 210 | 1210            | 540 | 430 | 315 | 670  | 340 | 275 | 75  | 465 | 440 | 31 | 520 | 415 | 470 | 215 | 260 | 22 | 90.5 | 36 | 148.5           | 900      | 40  |
| SBH-350 S | 80          | 170 | 150          | 275 | 1365            | 600 | 475 | 350 | 880  | 455 | 295 | 90  | 505 | 500 | 31 | 600 | 475 | 550 | 230 | 355 | 22 | 85.5 | 36 | 158.5           | 1700     | 70  |
| SBH-375 S | 80          | 170 | 150          | 275 | 1440            | 655 | 495 | 375 | 890  | 460 | 315 | 90  | 530 | 550 | 31 | 615 | 475 | 565 | 230 | 355 | 22 | 85.5 | 36 | 158.5           | 1850     | 80  |
| SBH-450 S | 90          | 190 | 190          | 300 | 1680            | 750 | 600 | 450 | 1055 | 540 | 400 | 100 | 660 | 620 | 47 | 680 | 545 | 610 | 245 | 375 | 25 | 95.5 | 45 | 200.5           | 2500     | 130 |

**Note :**

All Dimensions are in mm.  
\*Condition Apply



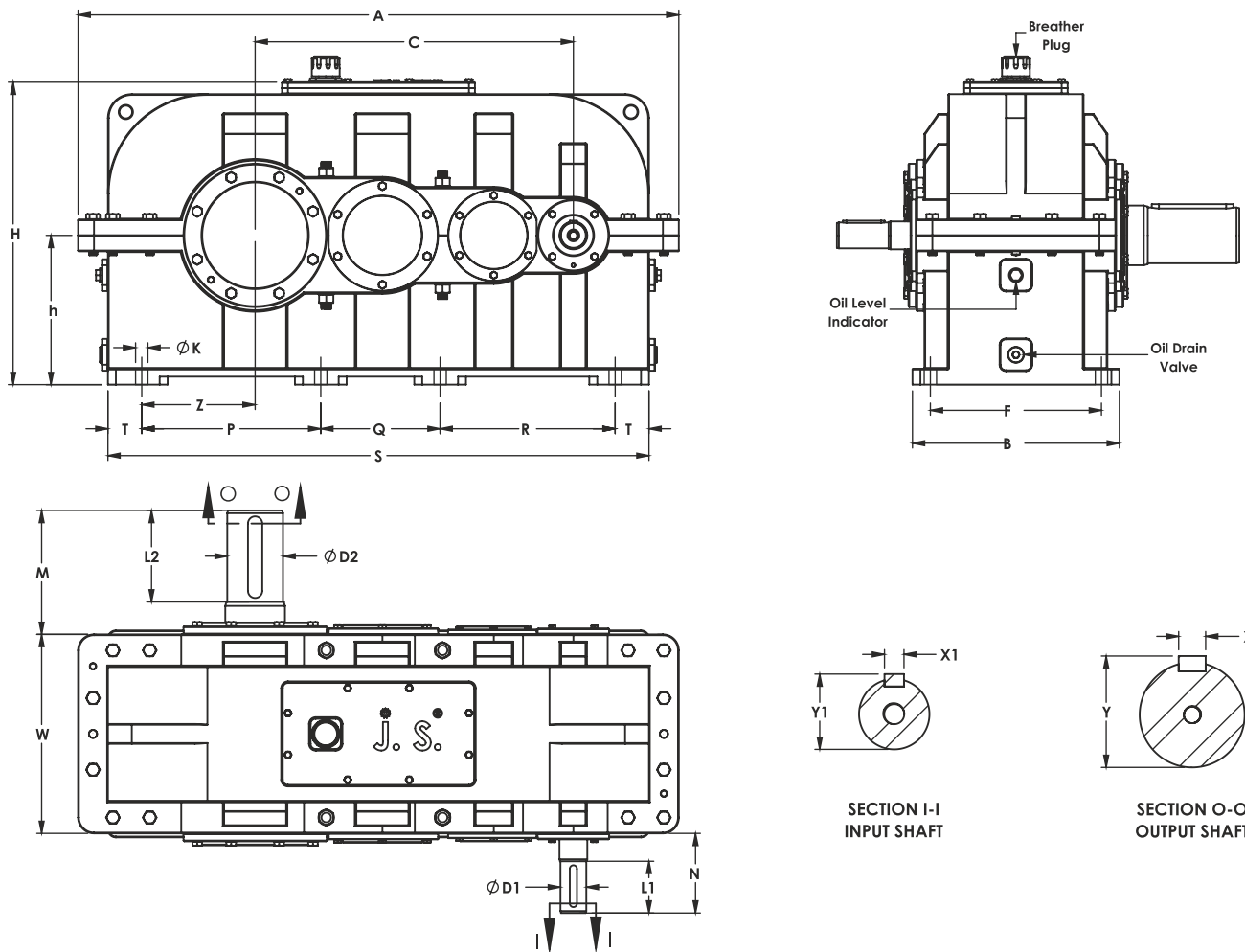
SCAN ME

# Selection Table

| RATIO | I/P RPM | O/P RPM | TWO STAGE HELICAL GEAR BOX – SBH-S SERIES – LARGE SIZE (INPUT KW RATING) |           |           |           |
|-------|---------|---------|--|-----------|-----------|-----------|
| In    | N1      | N2      | SBH-315-S  | SBH-350-S | SBH-375-S | SBH-450-S |
| 6.3   | 1500    | 240     | 540  | 771       | 848       | 1203      |
|       | 1000    | 160     | 365  | 522       | 574       | 814       |
|       | 750     | 120     | 279  | 398       | 438       | 621       |
| 7.1   | 1500    | 210     | 489  | 717       | 789       | 1077      |
|       | 1000    | 140     | 331  | 485       | 534       | 729       |
|       | 750     | 105     | 253  | 370       | 407       | 556       |
| 8     | 1500    | 188     | 440  | 643       | 707       | 959       |
|       | 1000    | 125     | 298  | 435       | 479       | 649       |
|       | 750     | 94      | 227  | 332       | 365       | 495       |
| 9     | 1500    | 167     | 395  | 571       | 628       | 848       |
|       | 1000    | 111     | 268  | 386       | 425       | 574       |
|       | 750     | 83      | 204  | 295       | 325       | 438       |
| 10    | 1500    | 150     | 392  | 503       | 553       | 762       |
|       | 1000    | 100     | 266  | 341       | 375       | 516       |
|       | 750     | 75      | 203  | 260       | 286       | 393       |
| 11.2  | 1500    | 134     | 384  | 447       | 492       | 688       |
|       | 1000    | 89      | 260  | 303       | 333       | 466       |
|       | 750     | 67      | 198  | 231       | 254       | 355       |
| 12.5  | 1500    | 120     | 275  | 398       | 438       | 600       |
|       | 1000    | 80      | 186  | 270       | 297       | 406       |
|       | 750     | 60      | 142  | 206       | 227       | 310       |
| 14    | 1500    | 107     | 243  | 352       | 387       | 534       |
|       | 1000    | 71      | 165  | 239       | 263       | 361       |
|       | 750     | 53      | 126  | 182       | 200       | 276       |
| 16    | 1500    | 94      | 222  | 321       | 353       | 489       |
|       | 1000    | 62      | 151  | 217       | 239       | 331       |
|       | 750     | 47      | 115  | 166       | 183       | 253       |
| 18    | 1500    | 83      | 197  | 285       | 314       | 427       |
|       | 1000    | 56      | 133  | 193       | 212       | 289       |
|       | 750     | 41      | 102  | 147       | 162       | 221       |
| 20    | 1500    | 75      | 175  | 221       | 243       | 363       |
|       | 1000    | 50      | 118  | 150       | 165       | 246       |
|       | 750     | 38      | 90   | 114       | 125       | 188       |
| 22.4  | 1500    | 75      | 153  | 220       | 242       | 325       |
|       | 1000    | 50      | 104  | 149       | 164       | 220       |
|       | 750     | 38      | 79   | 114       | 125       | 168       |

# Three Stage Parallel shaft

## Helical Gearboxes – HC Series



| Type    | Input Shaft |     | Output Shaft |     | Dimensions (mm) |      |     |     |      |    |     |     |     |      |     |     |     |     |     |    |    |      |    | Average Weight* | Oil Qty* |     |
|---------|-------------|-----|--------------|-----|-----------------|------|-----|-----|------|----|-----|-----|-----|------|-----|-----|-----|-----|-----|----|----|------|----|-----------------|----------|-----|
| Model   | ØD1         | L1  | ØD2          | L2  | C               | A    | H   | h   | Z    | T  | P   | Q   | R   | S    | W   | B   | F   | N   | M   | ØK | X1 | Y1   | X  | Y               | Kg       | Ltr |
| HC-250  | 24          | 50  | 42           | 70  | 250             | 475  | 245 | 135 | 87.5 | 25 | 350 | N/A | N/A | 400  | 160 | 168 | 140 | 72  | 98  | 14 | 8  | 27.5 | 12 | 45.5            | 50       | 4   |
| HC-300  | 28          | 60  | 48           | 80  | 300             | 535  | 270 | 135 | 45   | 30 | 105 | 115 | 90  | 340  | 180 | 195 | 165 | 70  | 90  | 14 | 8  | 31.5 | 14 | 52              | 70       | 5   |
| HC-350  | 28          | 80  | 55           | 100 | 350             | 650  | 350 | 180 | 135  | 25 | 220 | 135 | 165 | 570  | 245 | 255 | 215 | 110 | 125 | 16 | 8  | 31.5 | 16 | 59.5            | 140      | 10  |
| HC-425  | 38          | 80  | 70           | 105 | 425             | 760  | 415 | 210 | 145  | 35 | 230 | N/A | 380 | 680  | 270 | 300 | 250 | 130 | 135 | 21 | 10 | 41.5 | 20 | 75              | 250      | 15  |
| HC-500  | 48          | 100 | 90           | 150 | 500             | 885  | 485 | 250 | 140  | 55 | 250 | 195 | 240 | 795  | 295 | 295 | 245 | 135 | 185 | 21 | 14 | 52   | 25 | 95.5            | 350      | 22  |
| HC-550  | 45          | 120 | 95           | 170 | 550             | 1000 | 540 | 280 | 165  | 55 | 280 | 210 | 280 | 880  | 395 | 380 | 315 | 155 | 220 | 20 | 14 | 49   | 25 | 100.5           | 550      | 30  |
| HC-650  | 50          | 120 | 105          | 200 | 650             | 1190 | 665 | 355 | 220  | 55 | 360 | 250 | 335 | 1055 | 395 | 395 | 340 | 155 | 260 | 22 | 14 | 54   | 28 | 111.5           | 800      | 50  |
| HC-725  | 60          | 120 | 125          | 200 | 725             | 1330 | 690 | 350 | 255  | 50 | 410 | 280 | 400 | 1190 | 440 | 440 | 370 | 175 | 275 | 28 | 18 | 64.5 | 32 | 132.5           | 1000     | 60  |
| HC-800  | 65          | 130 | 140          | 230 | 800             | 1510 | 760 | 375 | 285  | 85 | 450 | 300 | 440 | 1360 | 500 | 520 | 430 | 200 | 310 | 31 | 18 | 69.5 | 36 | 148.5           | 1350     | 75  |
| HC-900  | 75          | 140 | 170          | 250 | 900             | 1675 | 840 | 415 | 315  | 90 | 505 | 330 | 480 | 1495 | 590 | 610 | 510 | 205 | 350 | 37 | 20 | 80   | 40 | 179.5           | 1500     | 170 |
| HC-1000 | 80          | 150 | 200          | 300 | 1000            | 1810 | 855 | 430 | 315  | 85 | 525 | 380 | 535 | 1610 | 640 | 640 | 530 | 220 | 395 | 38 | 22 | 85.5 | 45 | 210.5           | 2100     | 245 |

 **Note :**

All Dimensions are in mm.  
\*Condition Apply



SCAN ME

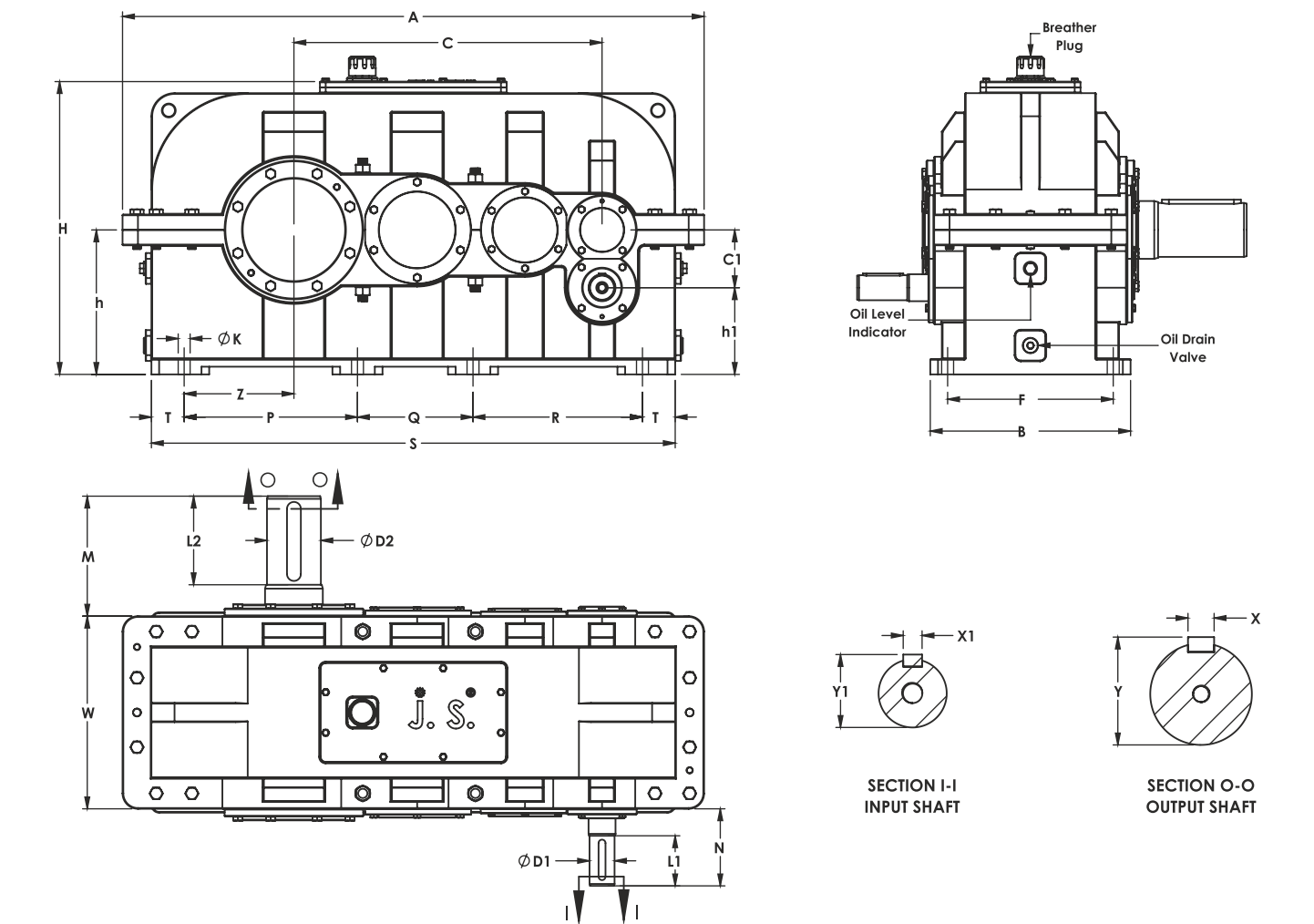
## Selection Table

| RATIO | I/P RPM | O/P RPM | THREE STAGE (HC) HELICAL GEAR SIZE (INPUT KW RATING) |      |      |     |      |       |       |       |       |       |       |  |
|-------|---------|---------|--|------|------|-----|------|-------|-------|-------|-------|-------|-------|--|
| In    | N1      | N2      | 250  | 300  | 350  | 425 | 500  | 550   | 650   | 725   | 800   | 900   | 1000  |  |
| 20    | 1500    | 75      | 16.8   | —    | —    | —   | —    | 144.8 | —     | —     | 384.8 | —     | —     |  |
|       | 1000    | 50      | 11.68  | ---  | ---  | --- | ---  | 98.4  | ---   | ---   | 290.4 | ---   | ---   |  |
| 22    | 1500    | 68.2    | 16.64  | ---  | ---  | --- | ---  | 130.4 | ---   | ---   | 350.4 | ---   | ---   |  |
|       | 1000    | 45.5    | 11.04  | ---  | ---  | --- | ---  | 91.2  | ---   | ---   | 264.8 | ---   | ---   |  |
| 25    | 1500    | 60      | 14.16  | 19.2 | 26.4 | 62  | 83.2 | 120   | 166.4 | 205.6 | 330.4 | 450.4 | 603.2 |  |
|       | 1000    | 40      | 9.28   | 12.8 | 16.8 | 42  | 56.8 | 83.2  | 114.4 | 136.8 | 255.2 | 315.2 | 404.8 |  |
| 28    | 1500    | 53.6    | 12.8   | 16.8 | 23.2 | 56  | 75.2 | 104.8 | 144.8 | 184.8 | 310.4 | 404.8 | 544   |  |
|       | 1000    | 35.7    | 8.4  | 11.2 | 14.4 | 38  | 54.4 | 72    | 102.4 | 123.2 | 230.4 | 284.8 | 363.2 |  |
| 31.5  | 1500    | 47.6    | 11.2   | 15.2 | 20   | 48  | 71.2 | 95.2  | 130.4 | 164   | 290.4 | 384.8 | 480.8 |  |
|       | 1000    | 31.7    | 7.6  | 10.4 | 13.6 | 33  | 47.2 | 63.2  | 87.2  | 109.6 | 200   | 255.2 | 320.8 |  |
| 35.5  | 1500    | 42.3    | 9.6  | 13.6 | 18.4 | 46  | 61.6 | 87.2  | 123.2 | 148   | 280   | 344.8 | 434.4 |  |
|       | 1000    | 28.2    | 6.72   | 8.8  | 12   | 30  | 41.6 | 58.4  | 82.4  | 99.2  | 184.8 | 230.4 | 289.6 |  |
| 40    | 1500    | 37.5    | 8.8  | 12   | 16.8 | 43  | 56   | 78.4  | 108.8 | 132.8 | 240   | 310.4 | 387.2 |  |
|       | 1000    | 25      | 5.92   | 7.92 | 12   | 28  | 37.6 | 52    | 72.8  | 88.8  | 164.8 | 204.8 | 258.4 |  |
| 45    | 1500    | 33.3    | 8  | 10.4 | 14.4 | 36  | 50.4 | 68.8  | 97.6  | 119.2 | 220   | 275.2 | 348.8 |  |
|       | 1000    | 22.2    | 5.36   | 7.04 | 10.4 | 25  | 33.6 | 46.4  | 65.6  | 80    | 150.4 | 180   | 232.8 |  |
| 50    | 1500    | 30      | 7.04   | 9.6  | 12   | 32  | 44.8 | 62.4  | 89.6  | 104   | 200   | 244.8 | 304   |  |
|       | 1000    | 20      | 4.72   | 6.32 | 8.8  | 22  | 29.6 | 43.2  | 60    | 69.6  | 135.2 | 164.8 | 203.2 |  |
| 56    | 1500    | 26.8    | 6.4  | 8.8  | 11.2 | 28  | 39.2 | 55.2  | 79.2  | 93.6  | 175.2 | 220   | 271.2 |  |
|       | 1000    | 17.9    | 4.24   | 5.68 | 7.68 | 19  | 27.2 | 38.4  | 52.8  | 62.4  | 120   | 144.8 | 180.8 |  |
| 63    | 1500    | 23.8    | 5.52   | 7.52 | 9.6  | 24  | 35.2 | 47.2  | 65.6  | 84    | 150.4 | 195.2 | 244.8 |  |
|       | 1000    | 15.9    | 3.6  | 5.04 | 6.08 | 16  | 24   | 31.2  | 43.2  | 56    | 104.8 | 130.4 | 163.2 |  |
| 71    | 1500    | 21.1    | 5.28   | 6.72 | 8    | 21  | 32   | 41.6  | 58.4  | 79.2  | 135.2 | 175.2 | 216   |  |
|       | 1000    | 14.4    | 3.44   | 4.48 | 5.68 | 14  | 21.6 | 28    | 39.2  | 52.8  | 92    | 115.2 | 144   |  |
| 80    | 1500    | 18.8    | 4.32   | 5.92 | 7.28 | 19  | 28.8 | 36    | 55.2  | 70.4  | 120   | 155.2 | 206.4 |  |
|       | 1000    | 12.5    | 2.88   | 4    | 5.2  | 13  | 19.2 | 24    | 34.4  | 47.2  | 82.4  | 100   | 137.6 |  |
| 90    | 1500    | 16.7    | 4.16   | 5.28 | 6.8  | 17  | 25.6 | 32.8  | 46.4  | 63.2  | 112   | 140   | 184   |  |
|       | 1000    | 11.1    | 2.72   | 3.6  | 4.72 | 11  | 17.6 | 21.6  | 31.2  | 42.4  | 75.2  | 92    | 122.4 |  |
| 100   | 1500    | 15      | ---  | 4.72 | 6.8  | 17  | 22.4 | 28.8  | 44    | 56.8  | 104.8 | 134.4 | 165.6 |  |
|       | 1000    | 10      | ---  | 3.2  | 4.72 | 11  | 15.2 | 19.2  | 29.6  | 37.6  | 70.4  | 89.6  | 110.4 |  |
| 112   | 1500    | 13.4    | ---  | 4.24 | 5.92 | 15  | 20.8 | 25.6  | 38.4  | 49.6  | 97.6  | 115.2 | 146.4 |  |
|       | 1000    | 8.9     | ---  | 2.8  | 4.08 | 9.6 | 13.6 | 17.6  | 25.6  | 32.8  | 65.6  | 75.2  | 97.6  |  |
| 120   | 1500    | 12.5    | ---  | 3.84 | 4.4  | 13  | 17.6 | 22.4  | 35.2  | 45.6  | 90.4  | 105.6 | 137.6 |  |
|       | 1000    | 8.3     | ---  | 2.48 | 3.04 | 8   | 12   | 15.2  | 22.4  | 29.6  | 60.8  | 65.6  | 88    |  |
| 140   | 1500    | 10.7    | ---  | 3.36 | 3.2  | 9.6 | 14.4 | 20    | 32    | 40    | 83.2  | 96    | 128   |  |
|       | 1000    | 7.1     | ---  | 2.24 | 2.56 | 6.4 | 9.6  | 13.6  | 19.2  | 25.6  | 55.2  | 60.8  | 78.4  |  |



# Four Stage Parallel shaft

## Helical Gearboxes – HD Series



| Type    | Input Shaft |     | Output Shaft |     | Dimensions (mm) |      |     |     |     |     |     |    |     |     |     |      |     |     |     |     |     |    |    |      | Average Weight* | Oil Qty* |      |     |
|---------|-------------|-----|--------------|-----|-----------------|------|-----|-----|-----|-----|-----|----|-----|-----|-----|------|-----|-----|-----|-----|-----|----|----|------|-----------------|----------|------|-----|
| Model   | ØD1         | L1  | ØD2          | L2  | C               | A    | H   | h   | C1  | h1  | Z   | T  | P   | Q   | R   | S    | W   | B   | F   | N   | M   | ØK | X1 | Y1   | X               | Y        | Kg   | Ltr |
| HD-500  | 34          | 75  | 90           | 150 | 500             | 885  | 485 | 250 | 90  | 160 | 140 | 55 | 250 | 195 | 240 | 795  | 295 | 295 | 245 | 115 | 185 | 21 | 10 | 37.5 | 25              | 95.5     | 415  | 22  |
| HD-550  | 35          | 80  | 95           | 170 | 550             | 1000 | 540 | 280 | 100 | 180 | 165 | 55 | 280 | 210 | 280 | 880  | 395 | 380 | 315 | 120 | 220 | 20 | 10 | 38.5 | 25              | 100.5    | 580  | 30  |
| HD-650  | 35          | 80  | 105          | 200 | 650             | 1190 | 665 | 355 | 130 | 225 | 220 | 55 | 360 | 250 | 335 | 1055 | 395 | 395 | 340 | 130 | 260 | 22 | 10 | 38.5 | 28              | 111.5    | 850  | 50  |
| HD-725  | 45          | 100 | 125          | 200 | 725             | 1330 | 690 | 350 | 150 | 200 | 255 | 50 | 410 | 280 | 400 | 1190 | 440 | 440 | 370 | 145 | 275 | 28 | 14 | 49   | 32              | 132.5    | 1070 | 60  |
| HD-800  | 60          | 130 | 140          | 230 | 800             | 1510 | 760 | 375 | 150 | 225 | 285 | 85 | 450 | 300 | 440 | 1360 | 500 | 520 | 430 | 175 | 310 | 31 | 18 | 64.5 | 36              | 148.5    | 1560 | 75  |
| HD-900  | 70          | 140 | 170          | 250 | 900             | 1675 | 840 | 415 | 180 | 235 | 315 | 90 | 505 | 330 | 480 | 1495 | 590 | 610 | 510 | 205 | 350 | 37 | 20 | 75   | 40              | 179.5    | 1650 | 170 |
| HD-1000 | 75          | 150 | 200          | 300 | 1000            | 1810 | 855 | 430 | 200 | 230 | 315 | 85 | 525 | 380 | 535 | 1610 | 640 | 640 | 530 | 220 | 395 | 38 | 20 | 80   | 45              | 210.5    | 2800 | 245 |

 **Note :**

All Dimensions are in mm.  
\*Condition Apply



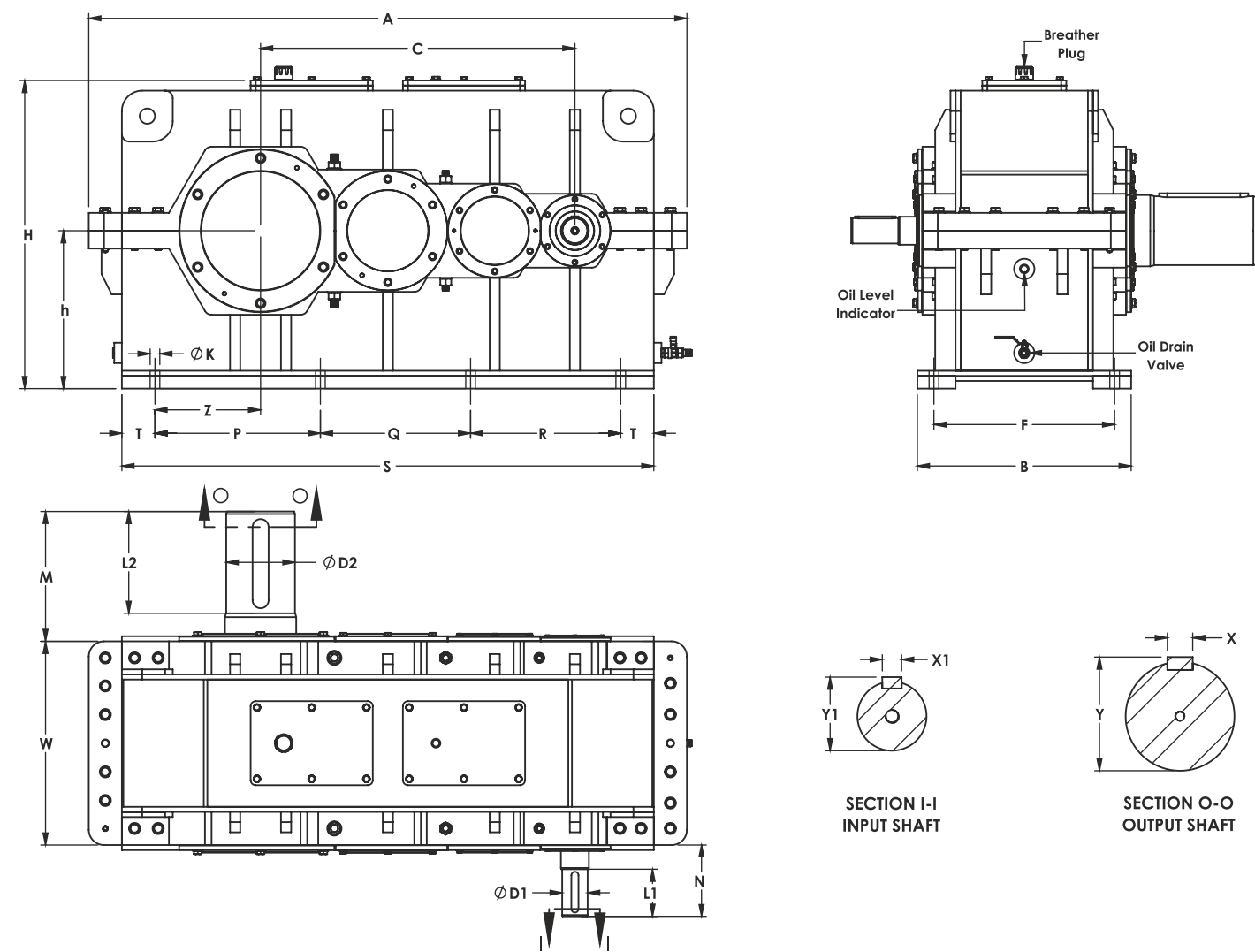
SCAN ME

## Selection Table

| RATIO | I/P RPM | O/P RPM | FOUR STAGE (HD) HELICAL GEAR SIZE (INPUT KW RATING) |         |         |         |         |         |          |
|-------|---------|---------|---|---------|---------|---------|---------|---------|----------|
| In    | N1      | N2      | 500+90  | 550+100 | 650+130 | 725+150 | 800+150 | 900+180 | 1000+200 |
| 90    | 1500    | 16.7    | ---   | 36      | ---     | ---     | 110.4   | ---     | ---      |
|       | 1000    | 11.1    | ---   | 24      | ---     | ---     | 73.6    | ---     | ---      |
| 100   | 1500    | 15      | ---   | 32.8    | ---     | ---     | 100     | ---     | ---      |
|       | 1000    | 10      | ---   | 21.6    | ---     | ---     | 66.4    | ---     | ---      |
| 112   | 1500    | 13.4    | ---   | 28.8    | ---     | ---     | 91.2    | ---     | ---      |
|       | 1000    | 8.9     | ---   | 20      | ---     | ---     | 59.2    | ---     | ---      |
| 125   | 1500    | 12      | 16.8  | 26.4    | 34.4    | 44      | 80.8    | 96.8    | 121.6    |
|       | 1000    | 8       | 11.2  | 16.8    | 22.4    | 29.6    | 52.8    | 64      | 80.8     |
| 140   | 1500    | 10.7    | 16.8  | 23.2    | 30.4    | 43.2    | 72      | 87.2    | 106.4    |
|       | 1000    | 7.1     | 11.2  | 16      | 20      | 28.8    | 47.2    | 56.8    | 71.2     |
| 160   | 1500    | 9.4     | 14.4  | 20      | 27.2    | 39.2    | 63.2    | 76      | 96.8     |
|       | 1000    | 6.3     | 9.6   | 14.4    | 18.4    | 26.4    | 42.4    | 51.2    | 64.8     |
| 180   | 1500    | 8.3     | 12  | 19.2    | 24.8    | 31.2    | 56.8    | 68.8    | 80.0     |
|       | 1000    | 5.6     | 7.84  | 12      | 16.8    | 20.8    | 38.4    | 46.4    | 54.4     |
| 200   | 1500    | 7.5     | 10.4  | 15.2    | 22.4    | 27.2    | 51.2    | 62.4    | 73.8     |
|       | 1000    | 5       | 7.12  | 10.4    | 14.4    | 18.4    | 34.4    | 40.8    | 48.8     |
| 224   | 1500    | 6.7     | 9.6   | 14.4    | 19.2    | 24      | 44.8    | 55.2    | 65.6     |
|       | 1000    | 4.5     | 6.4   | 8.8     | 13.6    | 16      | 30.4    | 36.8    | 43.2     |
| 250   | 1500    | 6       | 8   | 12      | 17.6    | 21.6    | 40      | 48      | 56.8     |
|       | 1000    | 4       | 5.6   | 8.8     | 12      | 14.4    | 27.2    | 32      | 38.4     |
| 280   | 1500    | 5.4     | 7.6   | 11.2    | 15.2    | 20      | 36      | 44      | 52       |
|       | 1000    | 3.6     | 5.12  | 7.52    | 10.4    | 12.8    | 24      | 28.8    | 34.4     |
| 315   | 1500    | 4.8     | 6.72  | 9.6     | 12.8    | 17.6    | 32      | 39.2    | 46.4     |
|       | 1000    | 3.2     | 4.48  | 6.48    | 9.6     | 12      | 20.8    | 24.8    | 29.6     |
| 355   | 1500    | 4.2     | 5.84  | 8.8     | 12.8    | 16      | 28.8    | 35.2    | 40.8     |
|       | 1000    | 2.8     | 3.92  | 6       | 8       | 10.4    | 19.2    | 23.2    | 27.2     |
| 400   | 1500    | 3.8     | 5.36  | 8       | 11.2    | 14.4    | 26.4    | 31.2    | 36       |
|       | 1000    | 2.5     | 3.6   | 5.04    | 7.52    | 9.6     | 16.8    | 20.0    | 24       |
| 450   | 1500    | 3.3     | 5.04  | 7.52    | 9.6     | 12.8    | 20.8    | 28.8    | 36.8     |
|       | 1000    | 2.2     | 3.36  | 5.04    | 6.64    | 8       | 14.4    | 19.2    | 24.8     |
| 500   | 1500    | 3       | 4.56  | 7.12    | 8.8     | 11.2    | ---     | 25.6    | 29.6     |
|       | 1000    | 2       | 3.04  | 4.72    | 6       | 7.52    | ---     | 17.6    | 20       |
| 560   | 1500    | 2.7     | 3.92  | 6.64    | 8       | 10.4    | ---     | 22.4    | 26.4     |
|       | 1000    | 1.8     | 2.64  | 4.32    | 5.28    | 6.72    | ---     | 15.2    | 17.6     |

# Fabricated Casing – Large Size

## HC Series Three Stage Gearboxes



| Type      | Input Shaft |     | Output Shaft |     | Dimensions (mm) |      |      |     |     |     |     |     |     |      |     |     |     |     |     |    |    |       |    | Average Weight* | Oil Qty* |     |
|-----------|-------------|-----|--------------|-----|-----------------|------|------|-----|-----|-----|-----|-----|-----|------|-----|-----|-----|-----|-----|----|----|-------|----|-----------------|----------|-----|
| Model     | ØD1         | L1  | ØD2          | L2  | C               | A    | H    | h   | Z   | T   | P   | Q   | R   | S    | W   | B   | F   | N   | M   | ØK | X1 | Y1    | X  | Y               | Kg       | Ltr |
| HC-1100 F | 95          | 175 | 225          | 350 | 1100            | 2085 | 1000 | 520 | 315 | 175 | 600 | 350 | 600 | 1835 | 730 | 730 | 605 | 280 | 475 | 38 | 25 | 100.5 | 50 | 236.5           | 4100     | 210 |
| HC-1235 F | 100         | 185 | 270          | 400 | 1235            | 2350 | 1210 | 620 | 415 | 130 | 650 | 590 | 590 | 2090 | 800 | 840 | 710 | 280 | 510 | 38 | 28 | 106.5 | 63 | 284.5           | 5500     | 350 |
| HC-1395 F | 100         | 200 | 295          | 355 | 1395            | 2540 | 1285 | 645 | 480 | 125 | 680 | 680 | 680 | 2290 | 855 | 910 | 780 | 280 | 520 | 52 | 28 | 106.5 | 70 | 310.5           | 6500     | 400 |
| HC-1600 F | 110         | 200 | 300          | 450 | 1650            | 2890 | 1380 | 695 | 475 | 170 | 820 | 545 | 935 | 2640 | 880 | 960 | 800 | 300 | 555 | 47 | 28 | 116.5 | 70 | 315.5           | 8000     | 435 |

 **Note :**

All Dimensions are in mm.  
\*Condition Apply



SCAN ME

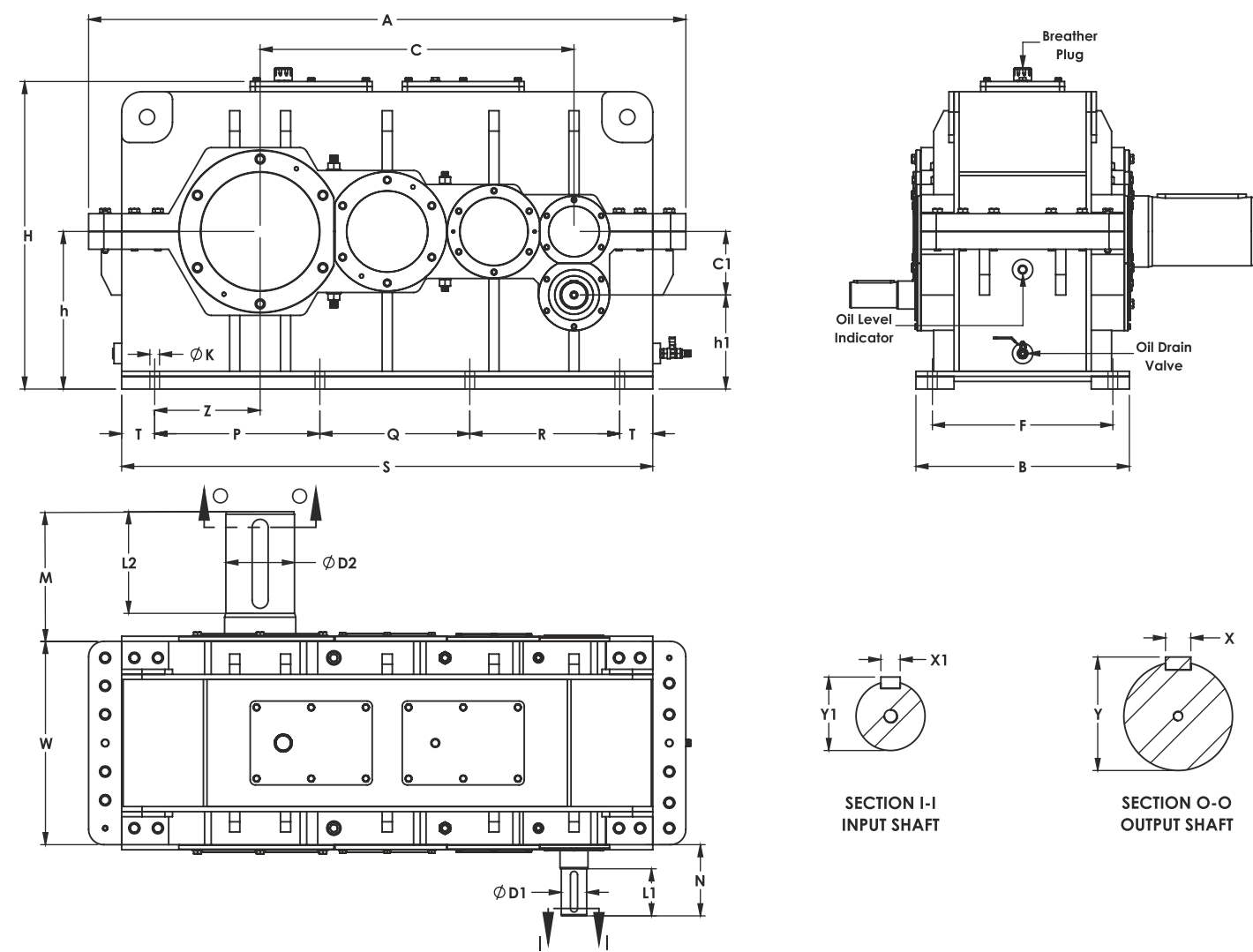
## Selection Table

| RATIO | I/P RPM | O/P RPM | THREE STAGE (HC) HELICAL GEAR SIZE (INPUT KW RATING) |        |        |        |
|-------|---------|---------|--|--------|--------|--------|
| In    | N1      | N2      | 1100-F   | 1235-F | 1395-F | 1600-F |
| 20    | 1500    | 75      | ---  | ---    | ---    | ---    |
|       | 1000    | 50      | ---  | ---    | ---    | ---    |
| 22    | 1500    | 68.2    | ---  | ---    | ---    | ---    |
|       | 1000    | 45.5    | ---  | ---    | ---    | ---    |
| 25    | 1500    | 60      | 772.5  | 1095   | 1447.5 | 2115   |
|       | 1000    | 40      | 547.5  | 780    | 1012   | 1508   |
| 28    | 1500    | 53.6    | 682.5  | 968    | 1275   | 1830   |
|       | 1000    | 35.7    | 480  | 683    | 893    | 1328   |
| 31.5  | 1500    | 47.6    | 615  | 878    | 1155   | 1695   |
|       | 1000    | 31.7    | 435  | 615    | 803    | 1200   |
| 35.5  | 1500    | 42.3    | 577.5  | 825    | 1072   | 1590   |
|       | 1000    | 28.2    | 382.5  | 540    | 412    | 1058   |
| 40    | 1500    | 37.5    | 525  | 743    | 968    | 1440   |
|       | 1000    | 25      | 348.5  | 495    | 645    | 960    |
| 45    | 1500    | 33.3    | 465  | 660    | 862    | 1282   |
|       | 1000    | 22.2    | 341  | 480    | 570    | 855    |
| 50    | 1500    | 30      | 412  | 585    | 772    | 1155   |
|       | 1000    | 20      | 274  | 390    | 518    | 765    |
| 56    | 1500    | 26.8    | 375  | 525    | 690    | 1027   |
|       | 1000    | 17.9    | 255  | 364    | 480    | 698    |
| 63    | 1500    | 23.8    | 330  | 472    | 608    | 915    |
|       | 1000    | 15.9    | 225  | 322    | 420    | 615    |
| 71    | 1500    | 21.1    | 296  | 420    | 548    | 817    |
|       | 1000    | 14.4    | 202  | 285    | 375    | 548    |
| 80    | 1500    | 18.8    | 262  | 372    | 480    | 720    |
|       | 1000    | 12.5    | 180  | 255    | 338    | 487    |
| 90    | 1500    | 16.7    | 240  | 342    | 450    | 660    |
|       | 1000    | 11.1    | 158  | 225    | 296    | 427    |
| 100   | 1500    | 15      | 217  | 308    | 405    | 585    |
|       | 1000    | 10      | 142  | 202    | 270    | 390    |
| 112   | 1500    | 13.4    | 192  | 270    | 356    | 517    |
|       | 1000    | 8.9     | 127  | 184    | 243    | 352    |
| 120   | 1500    | 12.5    | 162  | 225    | 300    | 442    |
|       | 1000    | 8.3     | 112  | 162    | 210    | 300    |
| 140   | 1500    | 10.7    | 135  | 180    | 255    | 360    |
|       | 1000    | 7.1     | 98   | 135    | 180    | 248    |



# Fabricated Casing – Large Size

## HD Series Four Stage Gearboxes



| Type      | Input Shaft |     | Output Shaft |     | Dimensions (mm) |      |      |     |     |     |     |     |     |     |     |      |     |     |     |     |     |    |    |       | Average Weight* | Oil Qty* |      |     |
|-----------|-------------|-----|--------------|-----|-----------------|------|------|-----|-----|-----|-----|-----|-----|-----|-----|------|-----|-----|-----|-----|-----|----|----|-------|-----------------|----------|------|-----|
| Model     | ØD1         | L1  | ØD2          | L2  | C               | A    | H    | h   | C1  | h1  | Z   | T   | P   | Q   | R   | S    | W   | B   | F   | N   | M   | ØK | X1 | Y1    | X               | Y        | Kg   | Ltr |
| HD-1100 F | 95          | 175 | 225          | 350 | 1100            | 2085 | 1000 | 520 | 225 | 295 | 315 | 175 | 600 | 350 | 600 | 1835 | 730 | 730 | 605 | 280 | 475 | 38 | 25 | 100.5 | 50              | 236.5    | 4500 | 210 |
| HD-1235 F | 70          | 150 | 270          | 400 | 1235            | 2350 | 1210 | 620 | 250 | 370 | 415 | 130 | 650 | 590 | 590 | 2090 | 800 | 840 | 710 | 240 | 510 | 38 | 20 | 75    | 63              | 284.5    | 5800 | 350 |
| HD-1395 F | 75          | 175 | 295          | 355 | 1395            | 2540 | 1285 | 645 | 225 | 420 | 480 | 125 | 680 | 680 | 680 | 2290 | 855 | 910 | 780 | 255 | 520 | 52 | 20 | 80    | 70              | 310.5    | 6800 | 400 |
| HD-1600 F | 110         | 200 | 300          | 450 | 1650            | 2890 | 1380 | 695 | 315 | 380 | 475 | 170 | 820 | 545 | 935 | 2640 | 880 | 960 | 800 | 300 | 555 | 47 | 28 | 116.5 | 70              | 315.5    | 8500 | 435 |

**Note :**

All Dimensions are in mm.  
\*Condition Apply



SCAN ME

## Selection Table

| RATIO | I/P RPM | O/P RPM | FOUR STAGE (HD) HELICAL GEAR SIZE (INPUT KW RATING) |            |            |            |
|-------|---------|---------|---|------------|------------|------------|
| In    | N1      | N2      | 1100+225-F  | 1235+250-F | 1395+225-F | 1600+315-F |
| 90    | 1500    | 16.7    | —   | —          | —          | —          |
|       | 1000    | 11.1    | ---   | ---        | ---        | ---        |
| 100   | 1500    | 15      | ---   | ---        | ---        | ---        |
|       | 1000    | 10      | ---   | ---        | ---        | ---        |
| 112   | 1500    | 13.4    | 191   | 270        | 360        | 518        |
|       | 1000    | 8.9     | 128   | 180        | 240        | 353        |
| 125   | 1500    | 12      | 173   | 240        | 319        | 458        |
|       | 1000    | 8       | 116   | 158        | 214        | 315        |
| 140   | 1500    | 10.7    | 154   | 218        | 285        | 413        |
|       | 1000    | 7.1     | 101   | 143        | 188        | 274        |
| 160   | 1500    | 9.4     | 135   | 191        | 255        | 371        |
|       | 1000    | 6.3     | 90  | 128        | 169        | 248        |
| 180   | 1500    | 8.3     | 120   | 169        | 221        | 326        |
|       | 1000    | 5.6     | 79  | 112        | 150        | 218        |
| 200   | 1500    | 7.5     | 109   | 154        | 203        | 296        |
|       | 1000    | 5       | 72  | 101        | 135        | 195        |
| 224   | 1500    | 6.7     | 98  | 139        | 180        | 266        |
|       | 1000    | 4.5     | 65  | 90         | 120        | 176        |
| 250   | 1500    | 6       | 86  | 124        | 161        | 236        |
|       | 1000    | 4       | 58  | 83         | 109        | 158        |
| 280   | 1500    | 5.4     | 75  | 109        | 143        | 206        |
|       | 1000    | 3.6     | 50  | 71         | 94         | 139        |
| 315   | 1500    | 4.8     | 68  | 98         | 128        | 188        |
|       | 1000    | 3.2     | 45  | 65         | 86         | 124        |
| 355   | 1500    | 4.2     | 62  | 86         | 116        | 169        |
|       | 1000    | 2.8     | 40  | 56         | 74         | 109        |
| 400   | 1500    | 3.8     | 53  | 75         | 101        | 146        |
|       | 1000    | 2.5     | 36  | 51         | 68         | 98         |
| 450   | 1500    | 3.3     | 49  | 69         | 90         | 131        |
|       | 1000    | 2.2     | 32  | 45         | 61         | 86         |
| 500   | 1500    | 3       | 44  | 62         | 83         | 116        |
|       | 1000    | 2       | 29  | 41         | 54         | 79         |
| 560   | 1500    | 2.7     | 38  | 53         | 71         | 105        |
|       | 1000    | 1.8     | 26  | 37         | 49         | 71         |

# Service & Maintenance



Anyone deciding in favour of J. S. high-performance gear unit automatically decides in favour of state- of-the-art engineering, efficient order handling and proven workflows. The know-how gathered in the course of decades enables us to fulfil all our customers' special requirements in many different sectors - from plastics via food processing all the way to heavy industry and energy supply flexibly and customized. J. S. provides comprehensive advice on selecting the right gearing solution, on dimensioning and on drafting technical specifications. Solid engineering competence goes with real effectiveness in implementing gearing solutions; this includes designing with innovative tools, planning production transparently and fabricating with ultra-modern equipment - adding up to your fastest and most productive path to your high-performance gear system from the experts.

## Our Core Strength



One Contact Principle



Quality Assurance



All-round Professionals



Sustainability Guarantee

## All-round Professionals

We at J. S. rely on mutual appreciation, respect and loyalty in its relations with customers and employees alike. Apart from Financial independence, sustainability is the foundation of our company.

## Fast Fix Guarantee

We guarantee that your gear system will be serviced / maintained/ repaired as fast as possible. We fabricate all the replacement parts needed ourselves which provides the decisive advantage in speed and time.

## Quality Assurance

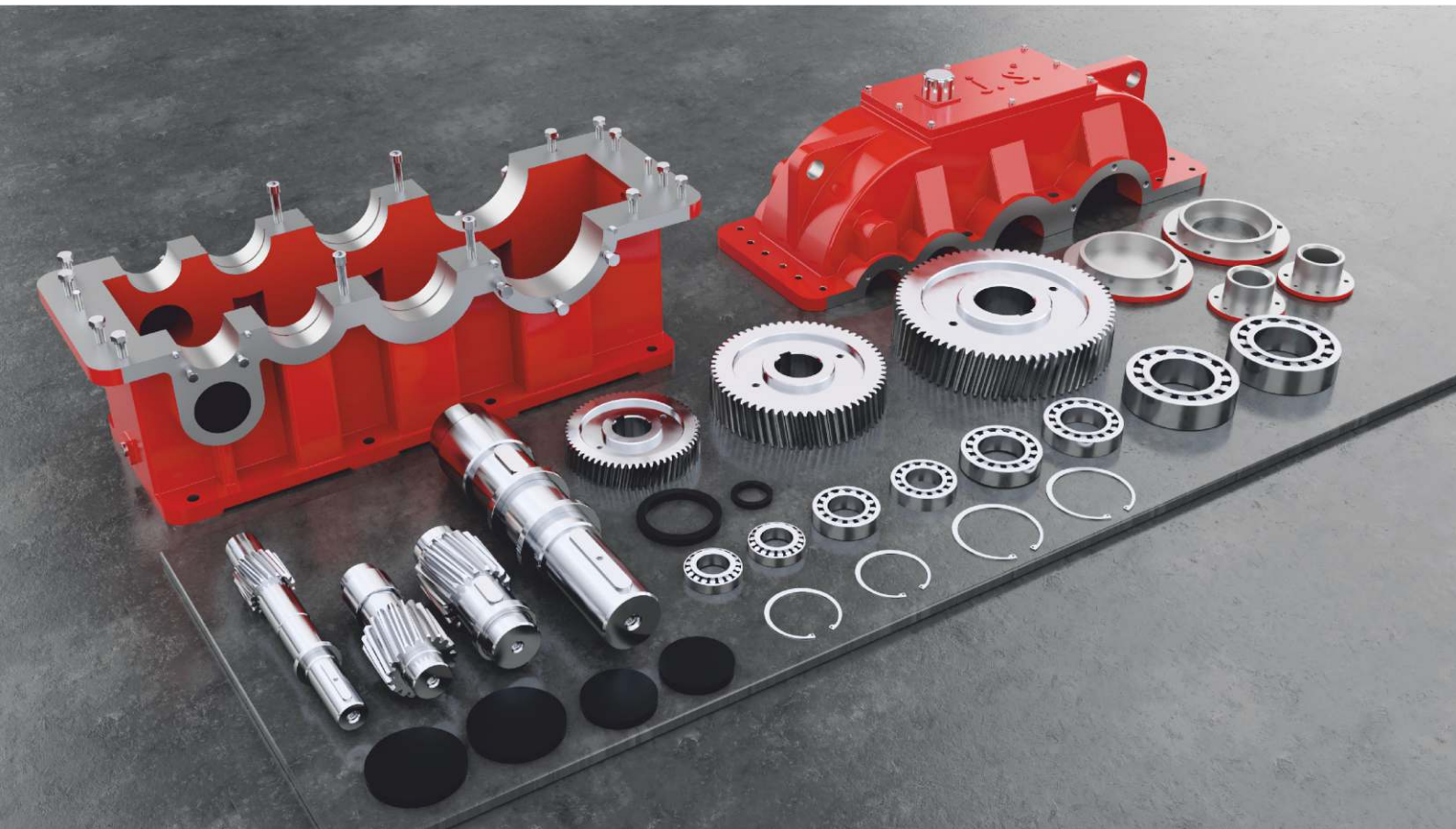
We use exclusively materials and components of selected, consistent quality. External and in-house test guarantee the highest quality of gear system solutions.

## One Contact Principle

At J. S. you talk to just one contact who will handle all your requests. He/she does not just supervise the entire service procedure but can also answer all your questions at any time.



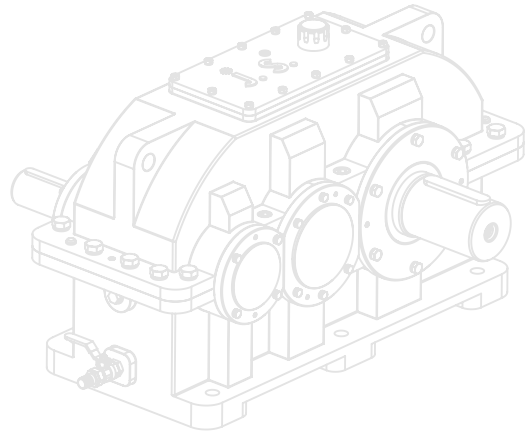
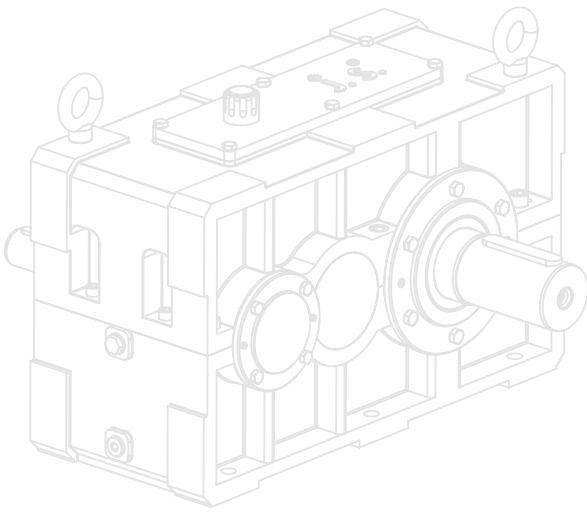
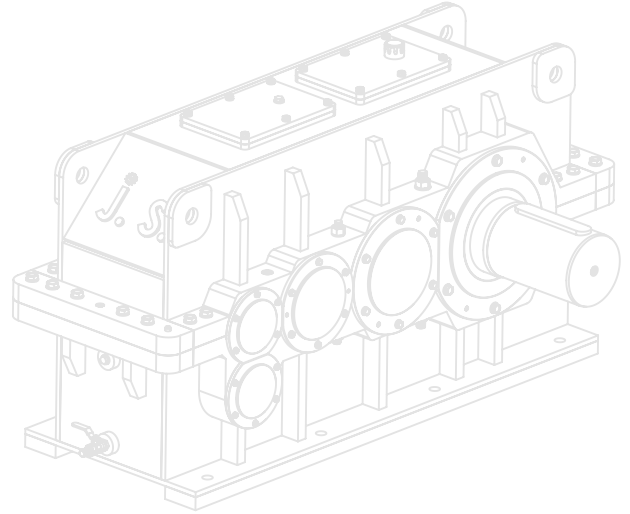
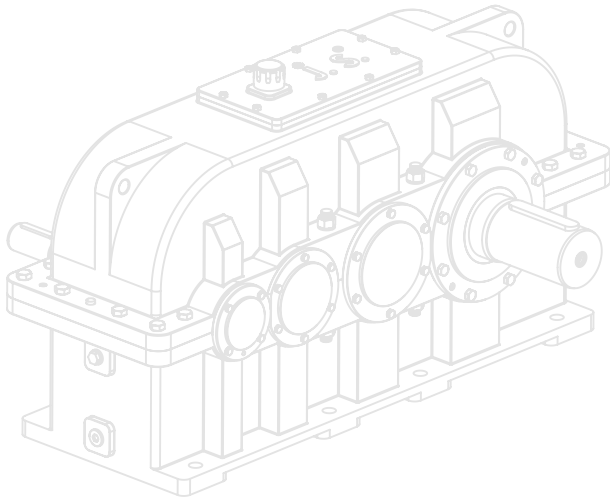
# Extend the life of your GEARBOX



# with Predictive Maintenance







 **J.S.** <sup>®</sup> Gear

(An ISO 9001 : 2015 Certified Company)

## Get In Touch



51, Saundarya Industrial Park, Bakrol-Bujrang Village,  
Tal.: Daskroi, Dist.: Ahmedabad-382 430. Gujarat, India.



[jsgears@jsgears.in](mailto:jsgears@jsgears.in)



[www.jsgears.in](http://www.jsgears.in)



YOUTUBE



E-CATALOGUE



WEBSITE